



WHITE CROSS

SUMMER 2021



WHITE CROSS



WEAR IT. LIVE IT.

White Cross is a 3rd-generation family business based in Montreal, Canada, distributing uniforms for over 100 years across North America, Latin America, Europe, and other parts of the world. Focusing on design & workmanship for functional & practical styling is what built the brand's reputation for uniqueness and creativity. As White Cross evolves, we remain true to the foundation of the business and stand by our brand.

Our Mission:
White Cross' commitment is to create, with care, uniforms for the healthcare professional. Passion & People drive us to deliver the highest quality.

Our Vision:
To be a company that enables you to live the part you play in this world...

Wear it. Live it.



*Spring into
with*

BLA
Black

PWT
Pewter

NAV
Navy

Summer

Seersucker

MRN
Marina

PLG
Pool Green

PKL
Pink Lemonade

A clean **bright** color palette and cool **stretchy** fabric defines this look. Pink Lemonade, Marina and Pool Green add a dash of **fun** to this new fresh style. A perfect trend to Spring into **Summer!**





BLA



PWT



NAV



MRN



PLG



PKL



980 NEW

- V neck
- Side knit stretch
- Utility bungee & sleeve pocket

Center Back Length 26"
XXS-3XL
 95% Polyester, 5% Spandex

- BLA-BLACK
- PWT-PEWTER
- NAV-NAVY
- MRN-MARINA
- PLG-POL GREEN
- PKL-PINK LEMONADE





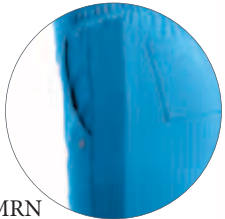
BLA



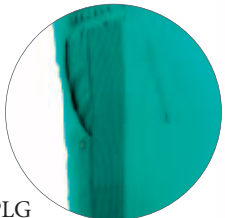
PWT



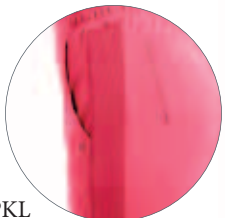
NAV



MRN



PLG



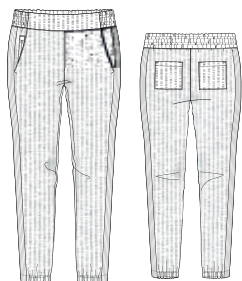
PKL



305/305P NEW

- Flat front back elastic waist
- 4 Pocket jogger
- Stretch knit side insert
- Inside zipper pocket
- Elastic gathering at ankle

Inseam: Regular 29" Petite 27"
REGULAR - XXS-3XL
PETITE - XXSP-2XLP
 95% Polyester, 5% Spandex

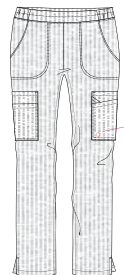


- BLA-BLACK
- PWT-PEWTER
- NAV-NAVY
- MRN-MARINA
- PLG-POOL GREEN
- PKL-PINK LEMONADE

306/306P NEW

- Multi double cargo pant
- Flat front draw cord waist
- Side slits

Inseam: Regular 31" Petite 29"
REGULAR - XXS-3XL
PETITE - XXSP-2XLP
 95% Polyester, 5% Spandex



WC 3D logo reflective Htr



- BLA-BLACK
- PWT-PEWTER
- NAV-NAVY
- MRN-MARINA
- PLG-POOL GREEN
- PKL-PINK LEMONADE



Dark Pewter - DPWT



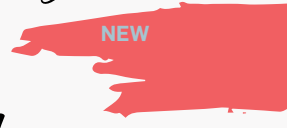
Taylor Grey - TGY



Black - BLA



Sweet Poppy - SWP



Navy - NAV



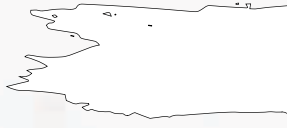
Royal - ROY



Lyons Blue - LYB



White - WHI



WHITE CROSS

V.ess

GO YOUR OWN SPEED



754

- V-neck
- Embossed heat transfer
- Front princess seam
- Decorative tape
- Side slits
- Bungee cord loop

Center Back Length: 26"

XS-3XL

74% Polyester, 19% Rayon, 7% Spandex



- BLA-BLACK
- TGY-TAYLOR GREY
- NAV-NAVY

796

- V-neck
- Embossed heat transfer
- Side slits

Center Back Length: 25"

XS-3XL

74% Polyester, 19% Rayon, 7% Spandex



- BLA-BLACK
- TGY-TAYLOR GREY
- NAV-NAVY
- ROY-ROYAL
- SWP-SWEET POPPY
- DPWT-DARK PEWTER
- WHI-WHITE
- LYB-LYONS BLUE

V.ess



794

- V-neck
- Embossed heat transfer
- Side slits
- Chest patch pocket

Center Back Length: 25"
XS-3XL
 74% Polyester, 19% Rayon,
 7% Spandex



- BLA-BLACK
- TGY-TAYLOR GREY
- NAV-NAVY
- ROY-ROYAL
- SWP-SWEET POPPY
- DPWT-DARK PEWTER
- WHI-WHITE
- LYB-LYONS BLUE

794 NEW 4XL-5XL

- BLA-BLACK
- TGY-TAYLOR GREY
- NAV-NAVY
- DPWT-DARK PEWTER



953

- Stand jersey collar
- Jersey cuffs
- 2 front patch pockets
- Embossed heat transfer
- Contrast piping detail

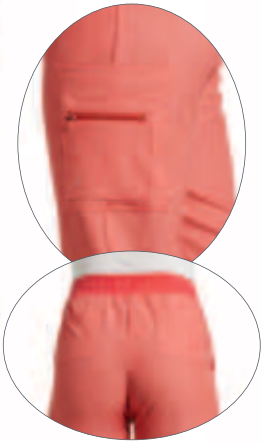
Center Back Length: 26"
XS-3XL
 74% Polyester, 19% Rayon,
 7% Spandex



- NAV-NAVY
- BLA-BLACK
- TGY-TAYLOR GREY
- WHI-WHITE
- DPWT-DARK PEWTER
- ROY-ROYAL



V.ess



380/380P NEW JOGGER

- Jogger pant
- Rib knit waistband
- Cargo pockets
- Zipped cargo pocket

Inseam: R: 31" P: 29"
REGULAR - XS-3XL
PETITE - XXSP-2XLP
 74% Polyester, 19% Rayon, 7% Spandex

- BLA-BLACK
- TGY-TAYLOR GREY
- NAV-NAVY
- ROY-ROYAL
- DPWT-DARK PEWTER
- WHI-WHITE
- SWP-SWEET POPPY
- LYB-LYONS BLUE



337/337P

- Decorative tape drawstring
- Jersey knit waistband
- Patch pockets
- Zipped cargo pockets
- Straight leg
- Side slit opening

Inseam: R: 31" P: 29"
REGULAR - XXS-3XL
PETITE - XXSP-2XLP
 74% Polyester, 19% Rayon, 7% Spandex

- BLA-BLACK
- TGY-TAYLOR GREY
- NAV-NAVY
- ROY-ROYAL
- DPWT-DARK PEWTER
- WHI-WHITE
- SWP-SWEET POPPY
- LYB-LYONS BLUE

337T

Inseam: T: 34"
TALL - XST-2XLT

- BLA-BLACK
- TGY-TAYLOR GREY
- NAV-NAVY
- DPWT-DARK PEWTER

337- REGULAR NEW 4XL-5XL

- BLA-BLACK
- TGY-TAYLOR GREY
- NAV-NAVY
- DPWT-DARK PEWTER



V.ess

NEW
FOR MEN



2206 NEW
-V-Neck Top
-Chest pocket
-Embossed logo

Center Back Length: 27"
XS-3XL
74% Polyester, 19% Rayon,
7% Spandex

- BLA-BLACK
- TGY-TAYLOR GREY
- NAV-NAVY
- DPWT-DARK PEWTER



2207 NEW
-V-Neck Top
-Detailed Chest pocket
-Patch pockets
-Embossed logo
-Badge loop

Center Back Length: 27"
XS-3XL
74% Polyester, 19% Rayon,
7% Spandex

- BLA-BLACK
- TGY-TAYLOR GREY
- NAV-NAVY
- DPWT-DARK PEWTER



V.ess

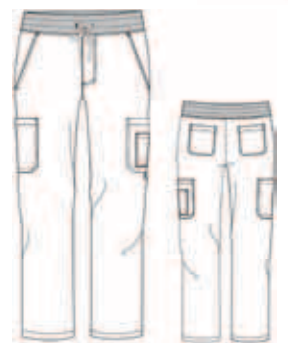


NEW
FOR MEN

227 NEW
-Straight leg
-Drawstring
-Cargo pockets

Inseam: 32"
XS-3XL
74% Polyester, 19% Rayon,
7% Spandex

- BLA-BLACK
- TGY-TAYLOR GREY
- NAV-NAVY
- DPWT-DARK PEWTER





WEAR
FIT.
LIVE
FIT.



WHITE CROSS | FIT



Seize the day-to-day with White Cross Fit: the professional & athletic look for the "active" you.



WHI WHITE	
PWT PEWTER	
BLA BLACK	
NAV NAVY	
CEILB CEIL BLUE	
ROY ROYAL	
GLB GALAXY BLUE	
PLB PALACE BLUE	
TEA TEAL	
RTE REAL TEAL	
CARIB CARIBBEAN	
WINE WINE	
SRD SCARLETT RED	
MJD MOONLIGHT JADE	
MYV MYSTIC VIOLET	
FUS FUCHSIA	
SUT SUNSET	
FLM FLAMINGO	
HLB HOLLY BERRY	NEW
WFB WINDSURF BLUE	NEW
MRG MINERAL GREEN	NEW





933 **NEW**

- Athletic sporty vibe
- Pop of pewter contrast
- Sleek styling

Center Back Length: 26 1/2"

XS-5XL

90% Polyester, 10% Spandex

BLA-BLACK WITH PEWTER TRIM

NAV-NAVY WITH PEWTER TRIM



746

- Athletic styling
- V-neck with side mesh inserts
- 4-way stretch fabric, quick dry fabric
- Tonal side mesh panels
- Available with contrasting mesh inserts
- Mesh front yoke for ventilation
- Mesh yoke detail
- Double needle top stitching
- Bartack for more security
- Embossed heat transfer
- Two front hidden pockets at seams
- Two mesh back yoke for ventilation

Center Back Length: 25"

XXS-3XL

90% Polyester, 10% Spandex

BLA-BLACK
PWT-PEWTER
NAV-NAVY
ROY-ROYAL
CEILB-CEIL BLUE
FUS-FUCHSIA
MYV-MYSTIC VIOLET
MJD-MOONLIGHT JADE
FLM-FLAMINGO



725

- Athletic styling
- V-neck with mesh inserts
- 4-way stretch fabric, quick dry fabric
- Embossed heat transfer
- Multiple front pockets
- Inner pocket
- Mesh yoke detail
- Bungee cord

Center Back Length: 26 3/8"
XXS-3XL

90% Polyester, 10% Spandex

- BLA-BLACK
- PWT-PEWTER
- NAV-NAVY
- ROY-ROYAL
- CEILB-CEIL BLUE
- MJD-MOONLIGHT JADE
- FLM-FLAMINGO



748

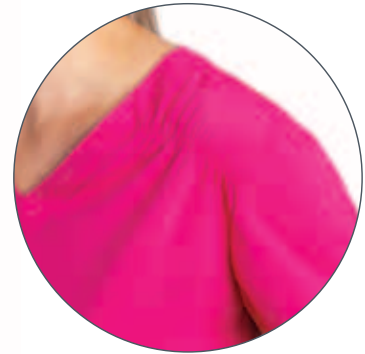
- Athletic styling
- V-neck with mesh inserts
- 4-way stretch fabric, quick dry fabric
- Tonal side mesh panels
- Mesh back yoke for ventilation
- Embossed heat transfer
- Mesh front yoke mock wrap style
- Multiple front pockets
- Inner pocket

Center Back Length: 26"

XXS-3XL

90% Polyester, 10% Spandex

- BLA-BLACK
- PWT-PEWTER
- NAV-NAVY
- ROY-ROYAL
- CEILB-CEIL BLUE
- FUS-FUCHSIA
- MYV-MYSTIC VIOLET
- MJD-MOONLIGHT JADE



931 NEW

- Athletic styling
- V Neck with ruching at the shoulder
- Multiple front pockets
- Side slits
- Bungee cord
- Darted back

Center Back Length: 26"

XS-3XL

90% Polyester, 10% Spandex

BLA-BLACK
PWT-PEWTER
NAV-NAVY
ROY-ROYAL
PLB-PALACE BLUE
FUS-FUCHSIA





NEW STYLISH JOGGER

367/367P NEW

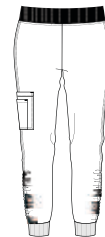
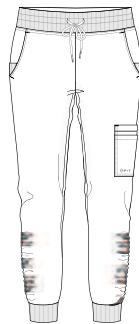
- Athletic styling
- Mid rise
- 4 way stretch
- Knit Elastic Waisband with drawstring
- Multi cargo pocket
- Ruching on bottom of legs
- Knit cuffed bottom

Inseam: Regular 29"
Petite 27"

REGULAR - XXS-3XL
PETITE - XXSP-2XLP

90% Polyester, 10% Spandex

BLA-BLACK
PWT-PEWTER
NAV-NAVY
ROY-ROYAL
PLB-PALACE BLUE
FUS-FUCHSIA





*Racer
back
detail*

785

- V-neck
- Front princess seaming
- 4-way stretch fabric, quick dry fabric
- Side slits
- Back yoke
- Detail stitching
- Front patch pockets

Center Back Length: 26"

XS-3XL

90% Polyester, 10% Spandex

BLA-BLACK
PWT-PEWTER
NAV-NAVY
GLB-GALAXY BLUE
ROY-ROYAL
CEILB-CEIL BLUE
SRD-SCARLETT RED
FLM-FLAMINGO
TEA-TEAL
CARIB-CARIBBEAN
MYV-MYSTIC VIOLET

FUS-FUCHSIA
PLB-PALACE BLUE
RTE-REAL TEAL
WINE-WINE
HLB-HOLLY BERRY
WFB-WINDSURF BLUE
MKG-MINERAL GREEN
WHI-WHITE





373

- Athletic styling
- 4-way stretch fabric, quick dry fabric
- Colors will vary for petite and tall
- Knit waistband
- Patch pockets
- Cargo pockets
- Seamed pockets

Inseam: Regular 31"
REGULAR - XXS-3XL
 90% Polyester, 10% Spandex

- BLA-BLACK
- PWT-PEWTER
- NAV-NAVY
- GLB - GALAXY BLUE
- ROY-ROYAL
- CEILB-CEIL BLUE

- RTE-REAL TEAL
- TEA-TEAL
- CARIB-CARIBBEAN
- SRD-SCARLETT RED
- FLM-FLAMINGO
- SUT-SUNSET
- MYV-MYSTIC VIOLET
- FUS-FUCHSIA
- MJD-MOONLIGHT JADE
- PLB-PALACE BLUE
- WINE-WINE
- HLB-HOLLY BERRY
- WFB-WINDSURF BLUE
- MRG-MINERAL GREEN
- WHI-WHITE

373P

Inseam: Petite 29"
PETITE - XXSP-2XLP

- BLA-BLACK
- PWT-PEWTER
- NAV-NAVY
- GLB - GALAXY BLUE
- ROY-ROYAL
- CEILB-CEIL BLUE
- TEA-TEAL
- RTE-REAL TEAL
- CARIB-CARIBBEAN
- SRD-SCARLETT RED
- PLB-PALACE BLUE
- WINE-WINE
- FLM-FLAMINGO
- HLB-HOLLY BERRY
- WFB-WINDSURF BLUE
- MRG-MINERAL GREEN

373T

Inseam: Tall 34"
TALL - XST-2XLT

- BLA-BLACK
- PWT-PEWTER
- NAV-NAVY
- GLB - GALAXY BLUE
- ROY-ROYAL
- CEILB-CEIL BLUE



WHITE CROSS |



365/365P

- Mid/high rise
- Seamed pockets
- 4-way stretch fabric, quick dry fabric
- Elastic waistband
- Tapered leg
- Elastic cinched hemline
- Stretch ribbed ankle
- Cargo pockets
- Embossed heat transfer

Inseam: Regular 29"
Petite: 27"

REGULAR - XXS-3XL
PETITE - XXSP-2XLP

90% Polyester, 10% Spandex

BLA-BLACK
PWT-PEWTER
NAV-NAVY
ROY-ROYAL
CEILB-CEIL BLUE
FUS-FUCHSIA
MYV-MYSTIC VIOLET
FLM-FLAMINGO
WHI-WHITE

399/399P

- Mid rise
- Front patch pockets
- Seamed pockets
- 4-way stretch fabric, quick dry fabric
- Elastic waistband
- Tapered leg
- Elastic cinched hemline
- Mesh inserts

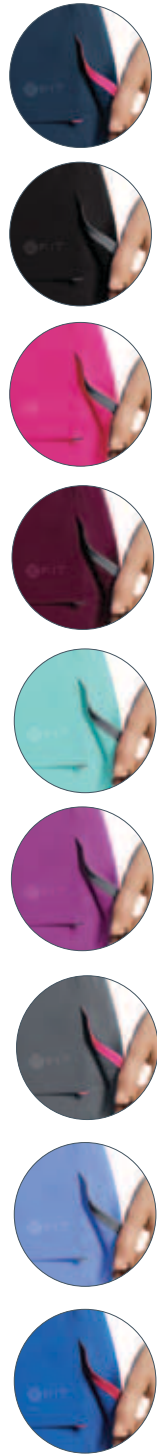
Inseam: Regular 29"
Petite 27"

REGULAR - XXS-3XL
PETITE - XXSP-2XLP

90% Polyester, 10% Spandex

BLA-BLACK
PWT-PEWTER
NAV-NAVY
ROY-ROYAL
CEILB-CEIL BLUE
FUS-FUCHSIA
MYV-MYSTIC VIOLET
MJD-MOONLIGHT JADE
FLM-FLAMINGO
CARIB-CARIBBEAN
SRD-SCARLETT RED
PLB-PALACE BLUE
HLB-HOLLY BERRY
WFB-WINDSURF BLUE
MRG-MINERAL GREEN





397/397P

- Athletic styling
- Mid-rise
- Straight leg
- 4-way stretch fabric, quick dry fabric
- Color availability may vary on Tall model
- Contrast mesh inside front waist band and inside pocket
- Elastic drawstring
- Back elastic inside waist
- Bungee cord
- Multiple cargo pockets
- Embossed heat transfer
- Contrast tape

Inseam: Regular 31"
Petite 29"

REGULAR - XXS-3XL
PETITE - XXSP-2XLP

90% Polyester, 10% Spandex

- BLA-BLACK
- PWT-PEWTER
- NAV-NAVY
- ROY-ROYAL
- CEILB-CEIL BLUE
- WINE-WINE
- FUS-FUCHSIA
- MYV-MYSTIC VIOLET

397T

Inseam: Tall 34"
TALL - XST-2XLT
90% Polyester, 10% Spandex

- BLA-BLACK
- PWT-PEWTER
- NAV-NAVY
- ROY-ROYAL
- CEILB-CEIL BLUE

328/328P

- Athletic styling
- Mid-rise
- 4-way stretch fabric, quick dry fabric
- Two front side pockets
- Yoga waist band
- Multiple cargo pockets
- Embossed heat transfer
- Straight leg
- Hidden pocket with invisible zipper
- Mesh yoke detail

Inseam: Regular 31"
Petite 29"

REGULAR - XXS-3XL
PETITE - XXSP-2XLP

90% Polyester, 10% Spandex

328

- BLA-BLACK
- PWT-PEWTER
- NAV-NAVY
- ROY-ROYAL
- CEILB-CEIL BLUE
- WINE-WINE
- MYV-MYSTIC VIOLET

328P

- BLA-BLACK
- PWT-PEWTER
- NAV-NAVY
- ROY-ROYAL



206

- Athletic styling
- Round neckline
- 100% polyester
- 4-way stretch fabric
- Moisture wicking
- Quick dry fabric

Center Back Length: 25"

XS-3XL

100% Polyester

BLA-BLACK	MYV-MYSTIC VIOLET
PWT-PEWTER	MJD-MOONLIGHT JADE
NAV-NAVY	FLM-FLAMINGO
GLB-GALAXY BLUE	WHI-WHITE
ROY-ROYAL	RTE-REAL TEAL
CEILB-CEIL BLUE	SRD-SCARLETT RED
TEA-TEAL	PLB-PALACE BLUE
CARIB-CARIBBEAN	
WINE-WINE	
FUS-FUCHSIA	

458 NEW

- Athletic styling
- 4 way stretch scuba fabric
- Sleek and sporty

Center Back Length: 24 1/2"

XS-3XL

90% Polyester, 10% Spandex

BLA-BLACK





452

- 4-way stretch fabric, quick dry fabric
- Slanted zip pockets

Center Back Length: 24"

XS-3XL

88% Polyester, 12% Spandex

BLA-BLACK



318

- High rise
- Wide elastic waistband
- Paneled seaming
- Seamed pockets
- Tapered leg

Inseam: 28"

XXS-3XL

88% Polyester, 12% Spandex

BLA-BLACK



2417

- Collar neckline
- Small inner pocket
- Book fold details
- 4-way stretch fabric, quick dry fabric
- Zipper double way
- Princess seam
- Side slits
- Side pocket
- 3/4 sleeves

BLA-BLACK
WHI-WHITE

Center Back Length: 32"
XXS-2XL

90% Polyester, 10% Spandex



957

- Athletic styling
- Stand collar with contrast interior
- 4-way stretch fabric, quick dry fabric
- Mesh trim cuffs
- 2 front slip pockets
- Mesh inserts
- Embossed heat transfer
- Mesh tape
- Branded zipper
- Back mesh yoke for ventilation

Center Back Length: 25"
XS-3XL

90% Polyester, 10% Spandex

BLA-BLACK
PWT-PEWTER
NAV-NAVY
ROY-ROYAL
CEILB-CEIL BLUE
WINE-WINE
FUS-FUCHSIA
WHI-WHITE



803

- Athletic styling
- Stand collar with contrast mesh interior
- 4-way stretch fabric, quick dry fabric
- Front princess seaming
- Front patch pockets
- Branded zipper full
- Mesh piping
- Contrast tape
- Side slits
- Embossed heat transfer
- Bungee cord

Center Back Length: 26"
XS-3XL

90% Polyester, 10% Spandex

BLA-BLACK
PWT-PEWTER
NAV-NAVY





**MY PEACH SPACE
746-MPC**

- Athletic styling
- V-neck with front, back and side mesh insert
- 4-way stretch, quick dry fabric
- Tonal side mesh panels
- Mesh front yoke for ventilation
- Mesh yoke detail
- Double needle top stitching
- Bartack for more security
- Embossed heat transfer
- Two front hidden pockets at seams
- Two mesh back yoke for ventilation

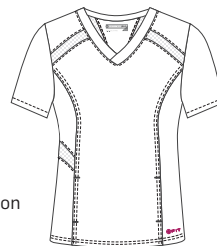


Center Back Length: 25"
XS-3XL

STRETCH: 92% Polyester, 8% Spandex

**MY PINK SPACE
746-MPS**

- Athletic styling
- V-neck with front, back and side mesh insert
- 4-way stretch, quick dry fabric
- Tonal side mesh panels
- Mesh front yoke for ventilation
- Mesh yoke detail
- Double needle top stitching
- Bartack for more security
- Embossed heat transfer
- Two front hidden pockets at seams
- Two mesh back yoke for ventilation



Center Back Length: 25"
XS-3XL

STRETCH: 92% Polyester, 8% Spandex

**MY FUCHSIA SPACE NEW
746-MFS**

- Athletic styling
- V-neck with front, back and side mesh insert
- 4-way stretch, quick dry fabric
- Tonal side mesh panels
- Mesh front yoke for ventilation
- Mesh yoke detail
- Double needle top stitching
- Bartack for more security
- Embossed heat transfer
- Two front hidden pockets at seams
- Two mesh back yoke for ventilation



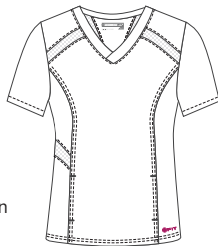
Center Back Length: 25"
XS-3XL

STRETCH: 92% Polyester, 8% Spandex



MY GREY SPACE 746-MGS

- Athletic styling
- V-neck with front, back and side mesh insert
- 4-way stretch, quick dry fabric
- Tonal side mesh panels
- Mesh front yoke for ventilation
- Mesh yoke detail
- Double needle top stitching
- Bartack for more security
- Embossed heat transfer
- Two front hidden pockets at seams
- Two mesh back yoke for ventilation



Center Back Length: 25"
XS-3XL

STRETCH: 92% Polyester, 8% Spandex

MY TEAL SPACE 746-MTP

- Athletic styling
- V-neck with front, back and side mesh insert
- 4-way stretch, quick dry fabric
- Tonal side mesh panels
- Mesh front yoke for ventilation
- Mesh yoke detail
- Double needle top stitching
- Bartack for more security
- Embossed heat transfer
- Two front hidden pockets at seams
- Two mesh back yoke for ventilation



Center Back Length: 25"
XS-3XL

STRETCH: 92% Polyester, 8% Spandex

MY BLUE SPACE 746-MBS

- Athletic styling
- V-neck with front, back and side mesh insert
- 4-way stretch, quick dry fabric
- Tonal side mesh panels
- Mesh front yoke for ventilation
- Mesh yoke detail
- Double needle top stitching
- Bartack for more security
- Embossed heat transfer
- Two front hidden pockets at seams
- Two mesh back yoke for ventilation



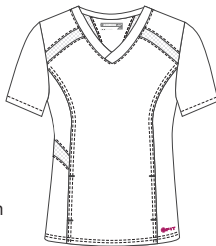
Center Back Length: 25"
XS-3XL

STRETCH: 92% Polyester, 8% Spandex



**MY PURPLE SPACE
746-MPU**

- Athletic styling
- V-neck with front, back and side mesh insert
- 4-way stretch, quick dry fabric
- Tonal side mesh panels
- Mesh front yoke for ventilation
- Mesh yoke detail
- Double needle top stitching
- Bartack for more security
- Embossed heat transfer
- Two front hidden pockets at seams
- Two mesh back yoke for ventilation



Center Back Length: 25"
XS-3XL

STRETCH: 92% Polyester, 8% Spandex

**FAST TRACK
795-FST**

- Athletic styling
- V-neck with front, back and side mesh insert
- 4-way stretch, quick dry fabric
- Tonal side mesh panels
- Mesh front yoke for ventilation
- Mesh yoke detail
- Double needle top stitching
- Bartack for more security
- Embossed heat transfer
- Two front hidden pockets at seams
- Two mesh back yoke for ventilation



Center Back Length: 25"
XS-3XL

STRETCH: 92% Polyester, 8% Spandex

**WILD PERFECTION
725-WLD**

- Athletic styling
- V-neck with mesh inserts
- 4-way stretch fabric, quick dry fabric
- Embossed heat transfer
- Multiple front pocket
- Inner pocket
- Mesh yoke detail
- Bungee cord



Center Back Length: 26 3/8"
XS-3XL

STRETCH: 92% Polyester, 8% Spandex



2269

- Athletic styling
- V-neck
- Chest patch pocket
- Stitching detail
- Badge loop
- 4-way stretch fabric, quick dry fabric
- Back mesh detail

Center Back Length: 27"
XS-3XL
 90% Polyester, 10% Spandex



- BLA-BLACK
- PWT-PEWTER
- NAV-NAVY
- ROY-ROYAL

2263

- Athletic styling
- V-neck
- Badge loop
- 4-way stretch fabric, quick dry fabric
- Patch pockets

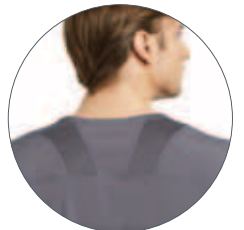
Center Back Length: 27"
XS-3XL
 90% Polyester, 10% Spandex

- BLA-BLACK
- PWT-PEWTER
- NAV-NAVY
- ROY-ROYAL
- CEILB-CEIL BLUE
- WINE-WINE

2266

- Athletic styling
- V-neck
- On seam slip pockets
- Back yoke
- Mesh insert
- Welt pocket
- Tonal mesh side panels

Center Back Length: 27"
XS-3XL
 90% Polyester, 10% Spandex



- BLA-BLACK
- PWT-PEWTER
- NAV-NAVY
- ROY-ROYAL
- CEILB-CEIL BLUE
- WINE-WINE
- GLB-GALAXY BLUE
- WHI-WHITE



224 - MESH SLIM PANT

- Slim leg
- Mid-rise
- Two side pockets with mesh detail
- Two back pockets
- Full elastic waistband with drawstring
- Embossed branded heat transfer
- Mesh yoke detail



Inseam: 32"
XS-3XL
 90% Polyester, 10% Spandex

- BLA-BLACK
- PWT-PEWTER
- NAV-NAVY
- ROY-ROYAL

229 -STRAIGHT LEG PANT

- Athletic styling
- Mid-rise
- Mock fly
- 4-way stretch fabric, quick dry fabric
- Yoga waistband
- Two side pockets with mesh detail
- Two back inside Reece pocket
- Embossed branded heat transfer



Inseam: 32 "
XS-3XL
 90% Polyester, 10% Spandex

- BLA-BLACK
- PWT-PEWTER
- NAV-NAVY
- ROY-ROYAL
- CEILB-CEIL BLUE
- WI NE-WINE
- GLB-GALAXY BLUE
- WHI-WHITE



223 -THE JOGGER

- Athletic styling
- Mid-rise
- Mock fly
- 4-way stretch fabric, quick dry fabric
- Two cargo pockets
- Two side pockets
- Two back pockets
- Embossed branded heat transfer



Inseam: 29 1/2"
XS-3XL
 90% Polyester, 10% Spandex

- BLA-BLACK
- PWT-PEWTER
- NAV-NAVY
- ROY-ROYAL
- CEILB-CEIL BLUE
- WINE-WINE



WHITE CROSS | FIT

NEW



RIVER STONE-NAVY NEW
2263-RST

- Athletic styling
- V-neck
- Badge loop
- 4-way stretch fabric, quick dry fabric
- Patch pockets

Center Back Length: 27"
XS-3XL

STRETCH: 92% Polyester, 8% Spandex

RIVER STONE-GREEN NEW
2263-RSG

- Athletic styling
- V-neck
- Badge loop
- 4-way stretch fabric, quick dry fabric
- Patch pockets

Center Back Length: 27"
XS-3XL

STRETCH: 92% Polyester, 8% Spandex

RIVER STONE-BLACK NEW
2263-RSB

- Athletic styling
- V-neck
- Badge loop
- 4-way stretch fabric, quick dry fabric
- Patch pockets

Center Back Length: 27"
XS-3XL

STRETCH: 92% Polyester, 8% Spandex



MY BLUE SPACE NEW
2263-MBS

- Athletic styling
- V-neck
- Badge loop
- 4-way stretch fabric, quick dry fabric
- Patch pockets

Center Back Length: 27"
XS-3XL

STRETCH: 92% Polyester, 8% Spandex



FLEECE JACKET
453

- Polar fleece warm-up
- Elastic trim
- Two inner pockets
- Yoke detail
- One zipper pocket

Center Back Length: 26"
XS-3XL
100% Polyester

BLA-BLACK



931 NEW
XS-3XL



785
XS-3XL



725
XS-3XL



COLORS

BLA-BLACK

PWT-PEWTER

NAV-NAVY

GLB-GALAXY BLUE

ROY-ROYAL

PLB-PALACE BLUE

CEILB-CEIL BLUE

TEA-TEAL

RTE-REAL TEAL

CARIB-CARIBBEAN

MJD-MOONLIGHT JADE

WHI-WHITE

MYV-MYSTIC VIOLET

WINE-WINE

SRD-SCARLETT RED

SUT-SUNSET

FUS-FUCHSIA

FLM-FLAMINGO

HLB-HOLLY BERRY

WFB-WINDSURF BLUE

MRG-MINERAL GREEN

WHI-WHITE

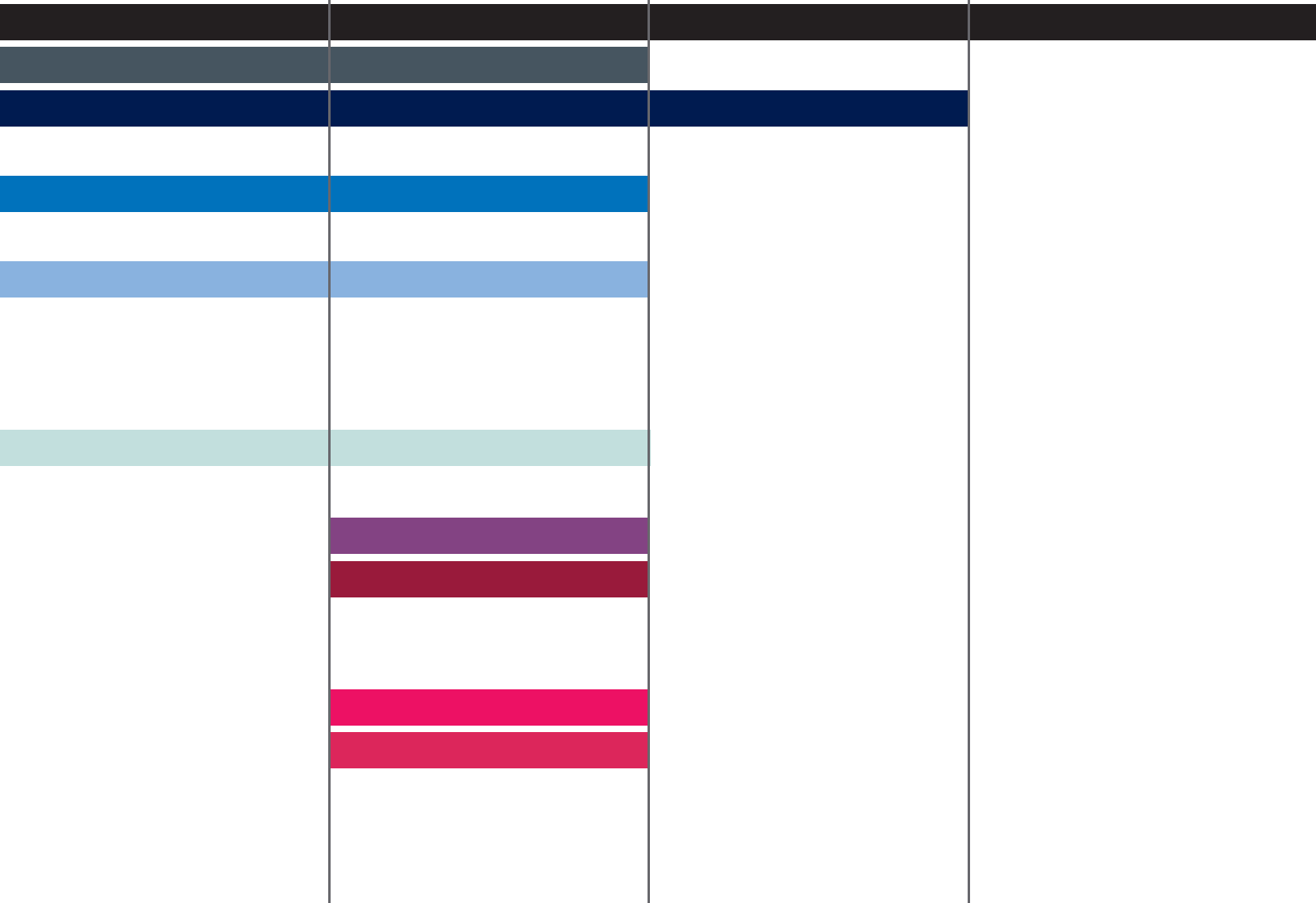


748
XXS-3XL

746
XXS-3XL

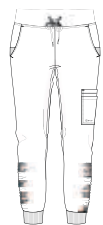
933 NEW
XS-5XL

458 NEW
XS-3XL





367/367P NEW
R - XXS-3XL
P - XXSP-2XLP



397/397P
R - XXS-3XL
P - XXSP-2XLP



397T
T - XST-2XLT



373
R - XXS-3XL



COLORS

BLA-BLACK

PWT-PEWTER

NAV-NAVY

GLB-GALAXY BLUE

ROY-ROYAL

PLB-PALACE BLUE

CEILB-CEIL BLUE

TEA-TEAL

RTE-REAL TEAL

CARIB-CARIBBEAN

MJD-MOONLIGHT JADE

WHI-WHITE

MYV-MYSTIC VIOLET

WINE-WINE

SRD-SCARLETT RED

SUT-SUNSET

FUS-FUCHSIA

FLM-FLAMINGO

HLB-HOLLY BERRY

WFB-WINDSURF BLUE

MRG-MINERAL GREEN

WHI-WHITE

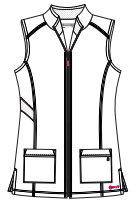


2417
XXS-2XL

206
XS-3XL

957
XS-3XL

803
XS-3XL



COLORS

BLA-BLACK

PWT-PEWTER

NAV-NAVY

GLB-GALAXY BLUE

ROY-ROYAL

PLB-PALACE BLUE

CEILB-CEIL BLUE

TEA-TEAL

RTE-REAL TEAL

CARIB-CARIBBEAN

MJD-MOONLIGHT JADE

WHI-WHITE

MYV-MYSTIC VIOLET

WINE-WINE

SRD-SCARLETT RED

SUT-SUNSET

FUS-FUCHSIA

FLM-FLAMINGO

HLB-HOLLY BERRY

WFB-WINDSURF BLUE

MRG-MINERAL GREEN

WHI-WHITE

WHI-WHITE

WHI-WHITE



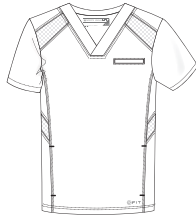
2269
XS-3XL



2263
XS-3XL



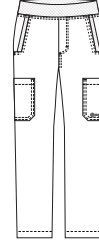
2266
XS-3XL



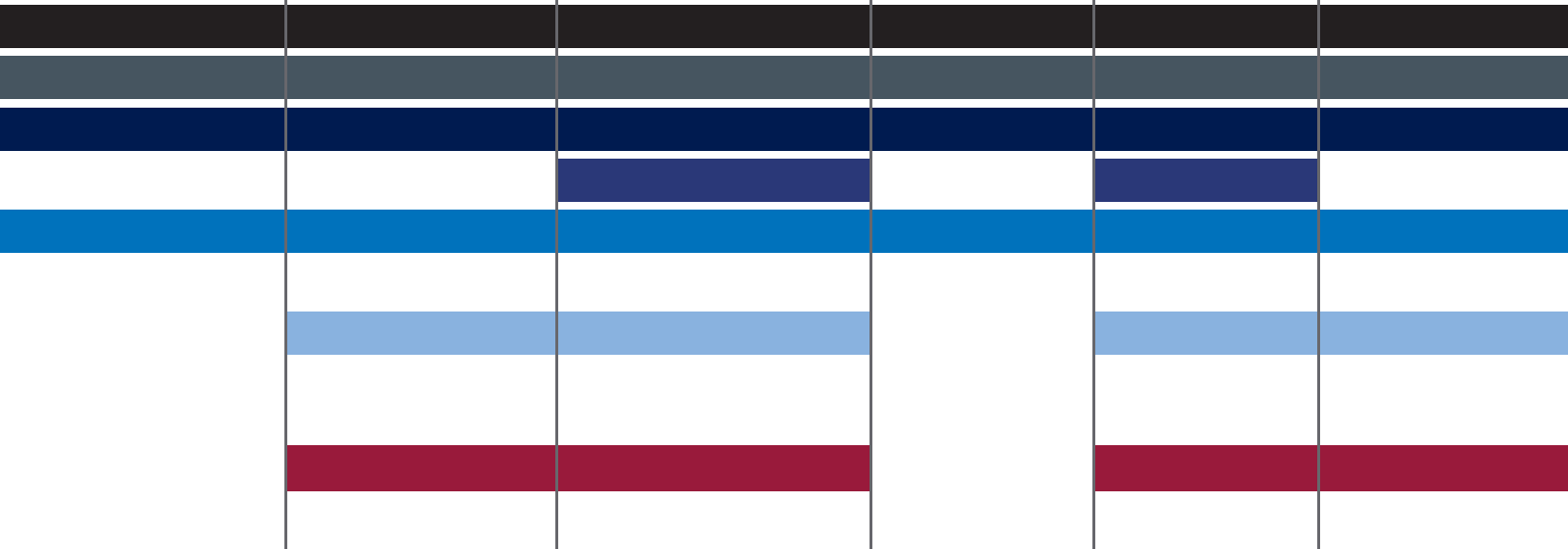
224
XS-3XL



229
XS-3XL



223
XS-3XL

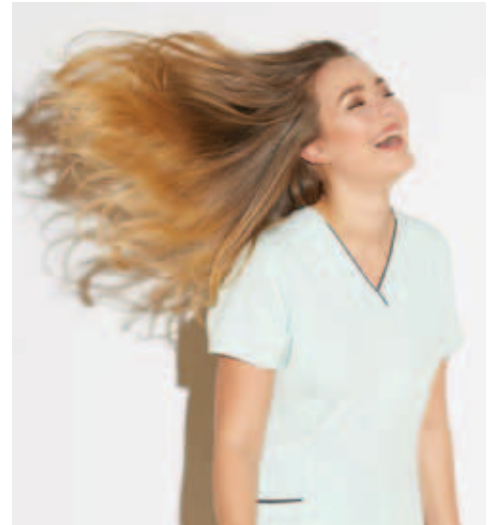
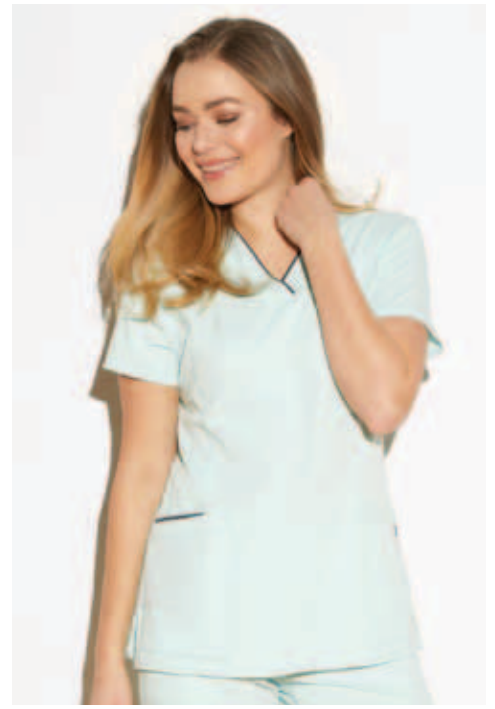


WHI-WHITE

WHI-WHITE

Marvella

SIMPLY STYLISH



Marvella COLORS

bla-black



whi-white



sle-slate



seg-steel grey



nav-navy



carib-caribbean



roy-royal



ceilb-ceil blue



bsu-bliss blue



New

cyp-city pearl



dpr-deep purple



wine-wine



pbh-pink blush



aqua-pure aqua



sage-sage



Start your day in style with scrubs that make a statement. This elegant collection was conceived to both flatter the body and feel luxurious on the skin. The tri-blend of Polyester, rayon and Spandex provide unmatched luxury and sophistication. Marvella by White Cross is the fashion must-have, where style and comfort go hand-in-hand.

Marvella



939 NEW

- V neck
- Pleated shoulders
- Side slits
- Center back pleat

Center Back Length: 26 1/2"

XS-3XL

62% Polyester, 34% Rayon, 4% Spandex

WHI-WHITE
CYP-CITY PEARL
BLA-BLACK
SLE-SLATE
NAV-NAVY
ROY-ROYAL
CEILB-CEIL BLUE



782

- V-neck
- Center stitching detail
- Shaping stitching
- Slanted patch pockets
- Side slits

Center Back Length: 26"

XXS-3XL

62% Polyester, 34% Rayon, 4% Spandex

WHI-WHITE
BLA-BLACK
NAV-NAVY
SLE-SLATE
PBH-PINK BLUSH
BSU-BLISS BLUE

755

- Two front patch pockets
- V neck
- Front Hidden pocket
- Bungee cord loop
- Side slits
- Yoke detail

Center Back Length: 26"

XXS-3XL

62% Polyester, 34% Rayon, 4% Spandex

WHI-WHITE	SAGE-SAGE
BLA-BLACK	PBH-PINK BLUSH
NAV-NAVY	ROY-ROYAL
SLE-SLATE	AQUA-PURE AQUA
DPR-DEEP PURPLE	CYP-CITY PEARL



Marvella



777

- Mock wrap
- Tonal side stretch panels
- Slanted patch pockets



Center Back Length: 26"
XXS-3XL
 62% Polyester, 34% Rayon,
 4% Spandex

- WHI-WHITE
- BLA-BLACK
- SEG-STEEL GREY
- NAV-NAVY
- ROY-ROYAL
- CEILB-CEIL BLUE
- WINE-WINE
- DPR-DEEP PURPLE

789

- Mock wrap
- Contrast piping detail
- Black book fold
- Self fabric in bias

Center Back Length: 26"
XXS-2XL
 62% Polyester, 34% Rayon,
 4% Spandex

- WHI-WHITE

659

- V-neck
- Princess seams
- Set-in sleeves
- Multiple front patch pockets
- Side slits

Center Back Length: 26"
XXS-3XL
 62% Polyester, 34% Rayon,
 4% Spandex

- WHI-WHITE
- BLA-BLACK
- SEG-STEEL GREY
- SLE-SLATE
- NAV-NAVY
- ROY-ROYAL

- CARIB-CARIBBEAN
- CEILB-CEIL BLUE
- PBH-PINK BLUSH
- DPR-DEEP PURPLE
- BSU-BLISS BLUE
- WINE-WINE
- AQUA-PURE AQUA
- CYP-CITY PEARL

945

- Jewel neckline
- Stretch side panels
- Patch pockets
- Small utility pocket
- Double zipper

Center Back Length: 26"
XXS-2XL
 62% Polyester, 34% Rayon,
 4% Spandex

- WHI-WHITE
- BLA-BLACK
- SEG-STEEL GREY
- NAV-NAVY
- ROY-ROYAL
- CEILB-CEIL BLUE
- DPR-DEEP PURPLE



Marvella

NEW STYLISH JOGGER



327/327P NEW

- Easy fit jogger
- Mid rise
- 4 way luxury stretch
- Knit elastic waistband with drawstring
- 6 pocket jogger
- Knit cuffed bottom

Inseam: Regular 29"
Petite 27"
REGULAR - XXS-2XL
PETITE - XXSP-2XLP
62% Polyester, 34% Rayon, 4% Spandex

- WHI-WHITE
- CYP-CITY PEARL
- BLA-BLACK
- SLE-SLATE
- NAV-NAVY

- ROY-ROYAL
- CEILB-CEIL BLUE



384

- Mid-rise
- Knit waistband
- Seamed pockets
- Patch pockets
- Side vents

Inseam: Regular 31"
XXS-3XL
62% Polyester, 34% Rayon,
4% Spandex

- WHI-WHITE
- BLA-BLACK
- NAV-NAVY
- SLE-SLATE
- PBH-PINK BLUSH
- BSU-BLISS BLUE
- AQUA-PURE AQUA
- CYP-CITY PEARL

384P

Inseam: Petite 29"
XXSP-2XLP
62% Polyester, 34% Rayon, 4% Spandex

- WHI-WHITE
- BLA-BLACK
- NAV-NAVY
- SLE-SLATE





354

- Mid-rise
- Cargo pockets
- Yoga waistband

Regular 31"
REGULAR - XXS-2XL
 62% Polyester, 34% Rayon,
 4% Spandex

- WHI-WHITE
- BLA-BLACK
- SEG-STEEL GREY
- NAV-NAVY
- ROY-ROYAL
- CEILB-CEIL BLUE
- DPR-DEEP PURPLE

354P

Petite 29"
PETITE - XXSP-2XLP
 62% Polyester, 34% Rayon, 4% Spandex

- BLA-BLACK
- NAV-NAVY
- DPR-DEEP PURPLE

354T

Tall 34"
TALL - XXST-2XLT
 62% Polyester, 34% Rayon, 4% Spandex

- BLA-BLACK
- NAV-NAVY
- DPR-DEEP PURPLE

309

- Mid-rise
- Banded waist
- Rounded pockets
- 1 Cargo pocket

Regular 31"
REGULAR - XXS-3XL
 62% Polyester, 34% Rayon,
 4% Spandex

- WHI-WHITE
- BLA-BLACK
- SEG-STEEL GREY
- SLE-SLATE
- NAV-NAVY
- ROY-ROYAL
- CARIB-CARIBBEAN
- CEILB-CEIL BLUE
- WINE-WINE
- DPR-DEEP PURPLE
- PBH-PINK BLUSH
- BSU-BLISS BLUE

309P

Petite 29"
PETITE - XXSP-2XLP
 62% Polyester, 34% Rayon,
 4% Spandex

- BLA-BLACK
- SEG-STEEL GREY
- NAV-NAVY

309T

Tall 34"
TALL - XXST-3XLT
 62% Polyester, 34% Rayon,
 4% Spandex

- BLA-BLACK
- NAV-NAVY



939 NEW
XS-3XL



782
XXS-3XL



755
XXS-3XL



659
XXS-3XL



777
XXS-3XL



945
XXS-2XL



COLORS

BLA-BLACK

WHI-WHITE

SLE-SLATE

SEG-STEEL GREY

NAV-NAVY

ROY-ROYAL

CARIB-CARIBBEAN

CEILB-CEIL BLUE

WINE-WINE

PBH-PINK BLUSH

DPR-DEEP PURPLE

BSU-BLISS BLUE

SAGE-SAGE

AQUA-PURE AQUA

CYP-CITY PEARL

WHI-WHITE

WHI-WHITE

WHI-WHITE

WHI-WHITE

WHI-WHITE

WHI-WHITE



789
XXS-2XL

327/327P NEW
R - XXS-2XL
P - XXSP-2XLP

384
XXS-3XL

384P
XXSP-2XLP

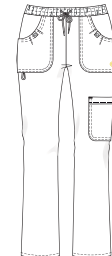
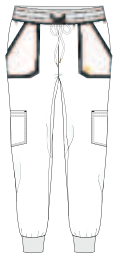
354
R - XXS-2XL

354P-354T
P - XXSP-2XLP
T - XXST-2XLT

309
R - XXS-3XL

309P
P - XXSP-2XLP

309T
T - XXST-3XLT



WHI-WHITE

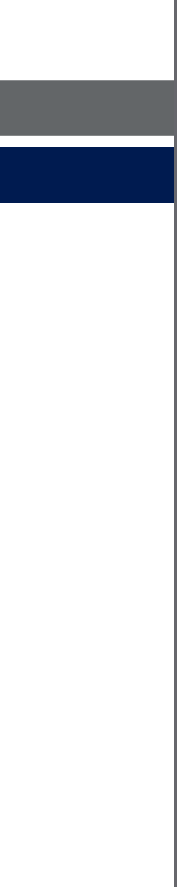
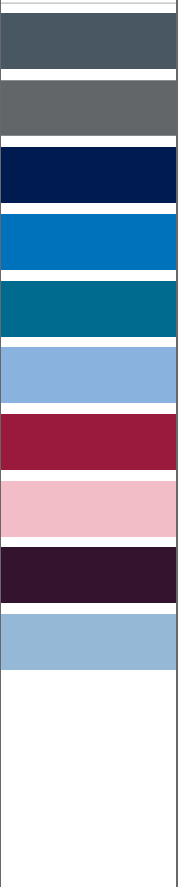
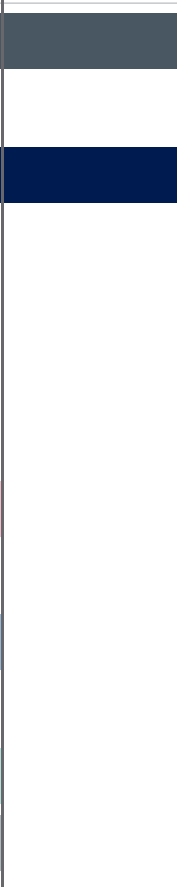
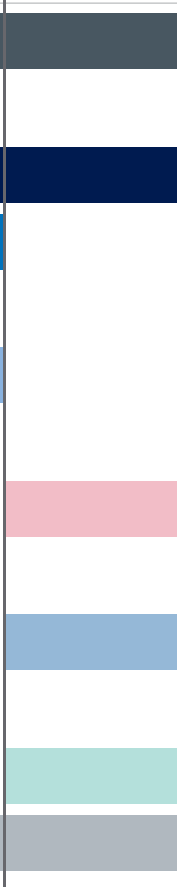
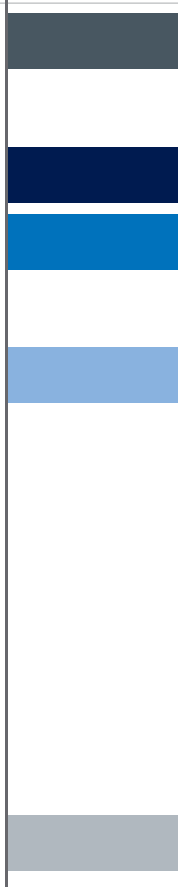
WHI-WHITE

WHI-WHITE

WHI-WHITE

WHI-WHITE

WHI-WHITE



ALLURE

STAY IN
YOUR
COMFORT
ZONE



COMFORTFLEX
&
STRETCH
TECHNOLOGY

COLORS

BLA
BLACK

PWT
Pewter

SLE
Slate

GRE
Grey

WHI
White

PKS
Pink Sachet

FUS
Fuchsia

PRK
Paris Pink

KHA
Khaki

MGT
Magic Mint

LIP
Lipstick

HRD
Heritage Red

WINE
Wine

BCR
Blue Curacao

CEILB
Ceil Blue

BHW
Blue Hawaii

ROY
Royal

CARIB
Caribbean

GLB
Galaxy Blue

NAV
Navy

Your job may be rough but your scrubs don't have to be. Thanks to a subtle blend of cotton, polyester and spandex, the Allure Collection by White Cross delivers versatility and comfort that is second to none. Natural cotton fibers provide a softer feel against the skin and form fitting styles using comfortflex technology help you move from task to task with ease and flexibility.



BLA-Black with Pink Cocktail and Grey

HRD-Heritage Red with Pewter and Black

FUS-Fuchsia with Pewter and Black

PWT-Pewter with Tangelo and Grey



CARIB-Caribbean with Grey and Pewter

WINE-Wine with Grey and Pewter

NAV-Navy with Blue Hawaii and Blue Curacao

CEILB-Ceil Blue with Navy and Grey

MGT-Magic Mint with Grey and Pewter



ROY - Royal with Grey and Pewter

NCB - Navy with Ceil Blue and Grey

GRE-Grey with Pewter and Black

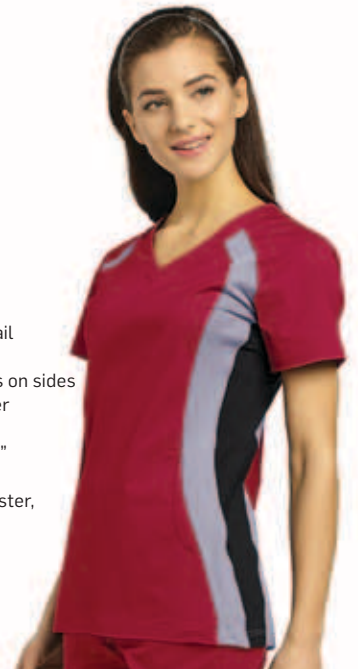
715

- Athletic styling
- Set-in sleeves
- Knit side panels
- Flat lock stitching detail
- Two front pockets
- 2 contrast jersey yokes on sides
- Reflective heat transfer

Center Back Length: 25"

XXS-3XL

62% Cotton, 36% Polyester,
2% Spandex





766

- V-neck
- Front patch pockets
- Side hidden pockets
- Bungee cord loop
- Side slit
- Side stretch panels



Center Back Length: 25"
XXS-3XL
 62% Cotton, 36% Polyester,
 2% Spandex

BLA-BLACK
PWT-PEWTER
NAV-NAVY
CEILB-CEIL BLUE
ROY-ROYAL



766C - CONTRAST

- V-neck
- Front patch pockets
- Side hidden pockets
- Bungee cord loop
- Side slit
- Contrast side stretch panels



Center Back Length: 25"
XXS-3XL
 62% Cotton, 36% Polyester,
 2% Spandex

BLA-BLACK, WITH PWT KNIT
PWT-PEWTER, WITH BLA KNIT
NAV-NAVY, WITH PWT KNIT
CEILB-CEIL BLUE, WITH PWT KNIT
ROY-ROYAL, WITH PWT KNIT
HRD-HERITAGE RED, WITH PWT KNIT



722

- V-neck
- Tone on tone jersey knit on sides
- Two inner pockets
- Side slits



Center Back Length: 26"

XXS-3XL
 62% Cotton, 36% Polyester,
 2% Spandex

CARIB-CARIBBEAN	WHI-WHITE
CEILB-CEIL BLUE	BLA-BLACK
WINE-WINE	PWT-PEWTER
FUS-FUCHSIA	GRE-GREY
ROY-ROYAL	NAV-NAVY
	GLB-GALAXY BLUE



COMFY PANT

YOGA PANT

949

- Knit trim
- Stitch detail
- Knit cuffs
- Button front opening
- Cardigan style
- Adjustable tabs at the back

Center Back Length: 27"

XS-3XL

62% Cotton, 36% Polyester, 2% Spandex

- WHI-WHITE
- BLA-BLACK
- PWT-PEWTER
- NAV-NAVY
- CEILB-CEIL BLUE

308

- Mid-rise
- Full elastic waist with drawstring closure
- Two front side pocket
- Bungee cord loop
- Double needle top stitching detail
- 1 back pocket
- Straight leg

Regular 31"

REGULAR - XXS-5XL

62% Cotton, 36% Polyester, 2% Spandex

- WHI-WHITE
- BLA-BLACK
- PWT-PEWTER
- GRE-GREY
- CARIB-CARIBBEAN
- WINE-WINE
- NAV-NAVY
- CEILB-CEIL BLUE
- MGT-MAGIC MINT

308P

Petite 29 1/2"
PETITE - XXSP-2XLP

- BLA-BLACK
- PWT-PEWTER
- NAV-NAVY
- MGT-MAGIC MINT

308T

Tall 34"
TALL - XST-2XLT

- BLA-BLACK
- PWT-PEWTER
- NAV-NAVY

351

- Cargo pockets
- Knit side panels
- Yoga waist band
- Two front side pockets
- Reflective heat transfer
- Side vents

Regular 31"

REGULAR - XXS-3XL

62% Cotton, 36% Polyester, 2% Spandex

- BLA-BLACK
- CARIB-CARIBBEAN
- CEILB-CEIL BLUE
- BHW-BLUE HAWAII
- FUS-FUCHSIA
- GLB-GALAXY BLUE
- GRE-GREY
- HRD-HERITAGE RED
- KHA-KHAKI
- MGT-MAGIC MINT
- NAV-NAVY
- PRK-PARIS PINK
- PWT-PEWTER
- ROY-ROYAL
- WHI-WHITE
- WINE-WINE

351P

Petite 29 1/2"
PETITE - XXSP-3XLP

- BLA-BLACK
- CEILB-CEIL BLUE
- FUS-FUCHSIA
- HRD-HERITAGE RED
- KHA-KHAKI
- NAV-NAVY
- PRK-PARIS PINK
- PWT-PEWTER
- ROY-ROYAL
- WHI-WHITE

351T

Tall 34"
TALL - XXST-3XLT

- BLA-BLACK
- BCR-BLUE CURACAO
- BHW-BLUE HAWAII
- FUS-FUCHSIA
- NAV-NAVY
- PRK-PARIS PINK
- PWT-PEWTER
- WHI-WHITE
- ROD-RADIAN ORCHID

ALLURE M

MEN'S PANT



225

- Natural rise
- Drawstring waistband with adjustable tie closure
- Front patch pockets with utility loop
- Mock fly
- Cargo pockets
- Straight leg

Inseam: 31"

XS-3XL

62% Cotton, 36% Polyester, 2% Spandex

WHI-WHITE

BLA-BLACK

PWT-PEWTER

NAV-NAVY

ROY-ROYAL

CEILB-CEIL BLUE

2265

- Front yolk
- Contrast top and stitching also available
- Banded V-neck
- Badge loop
- Chest patch pocket
- Double patch pockets
- Side slits

Center Back Length: 30"

XS-3XL

62% Cotton, 36% Polyester, 2% Spandex

WHI-WHITE

BLA-BLACK

PWT-PEWTER

NAV-NAVY

ROY-ROYAL

CEILB-CEIL BLUE



	949 XS-3XL	715 XXS-3XL	766 XXS-3XL	766C XXS-3XL	722 XXS-3XL
COLORS					
BLA-BLACK					
WHI-WHITE	WHI-WHITE				WHI-WHITE
SLE-SLATE					
PWT-PEWTER					
GRE-GREY					
NAV-NAVY					
ROY-ROYAL					
GLB-GALAXY BLUE					
CARIB-CARIBBEAN					
CEILB-CEIL BLUE					
WINE-WINE					
HRD-HERITAGE RED					
LIP-LIPSTICK					
FUS-FUCHSIA					
PKS-PINK SACHET					
PRK-PARIS PINK					
KHA-KHAKI					
MGT-MAGIC MINT					
BCR-BLUE CURACAO					
BHW-BLUE HAWAII					



308
R - XXS-5XL

308P
P - XXSP-2XLP

308T
T - XST-2XLT

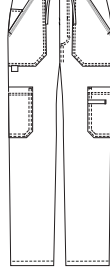
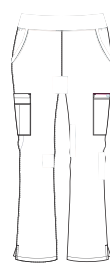
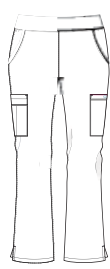
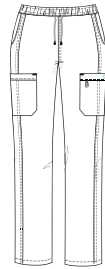
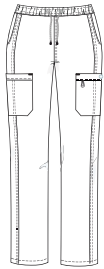
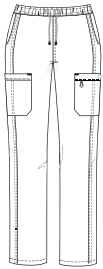
351
R - XXS-3XL

351P
P - XXSP-3XLP

351T
T - XXST-3XLT

2265
XS-3XL

225
XS-3XL



WHI-WHITE

WHI-WHITE

WHI-WHITE

WHI-WHITE

WHI-WHITE

WHI-WHITE

UNDER SCRUBS

FRENCH TERRY & VEST



STRETCH T-SHIRT 205

- Ultra stretch fabric
- Crew neckline

Center Back Length: 27"

XS-3XL

95% Cotton, 5% Spandex

WHI-WHITE
BLA-BLACK
NAV-NAVY
PWT-PEWTER
GRE-GREY
CEILB-CEIL BLUE
BCR-BLUE CURACAO
GAP-GREEN APPLE
FUS-FUCHSIA
MYV-MYSTIC VIOLET
HRD-HERITAGE RED
ROY-ROYAL

FLEECE JACKET 453

- Polar fleece warm-up
- Elastic trim
- Two inner pockets
- Yoke detail
- One zipper pocket

Center Back Length: 26"

XS-3XL

100% Polyester

BLA-BLACK



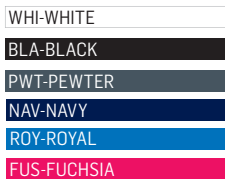


WHITE CROSS



FLEECE JACKET 448

- Polar fleece warm-up
- Elastic trim
- Raglan sleeve
- Two inner pockets
- Plastic zipper with branded pull
- Yoke detail on sides



Center Back Length: 26"

XS-3XL

100% Polyester



FRENCH TERRY JACKET 445

- French terry warm-up
- Knit cuffs
- Flat lock top stitching detail
- Yoke detail
- Princess seam
- Two inner pockets
- Plastic zipper with branded pull

Center Back Length: 24"

XS-3XL

96% Cotton, 4% Spandex

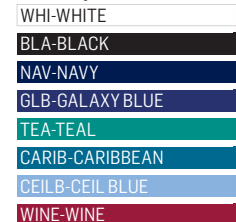


VEST 802

- V-neck
- Sleeveless vest silhouette
- Button front opening
- Adjustable drawstring
- 2 Patch pockets
- Side slits
- Inner pockets

XS-3XL

65% Polyester, 35% Cotton



PRINTS

SHOW
YOUR
PERSONALITY



WHAT'S NEW AND HOT



PINK TIE DYE NEW
618-PTD

Center Back Length: 26"
XS-5XL
STRETCH: 92% Polyester,
8% Spandex



BLUE TIE DYE NEW
618-TDB

Center Back Length: 26"
XS-5XL
STRETCH: 92% Polyester,
8% Spandex



TIE DYE HEART NEW
618-TDH

Center Back Length: 26"
XS-3XL
STRETCH: 92% Polyester,
8% Spandex



FLORAL FANTASY NEW
782-FTY

Center Back Length: 26"
XS-3XL
STRETCH: 92% Polyester,
8% Spandex



BISCUITS & TEA NEW
618-BCT

Center Back Length: 26"
XS-3XL
STRETCH: 92% Polyester,
8% Spandex



POSY PICTURE NEW
618-PPS

Center Back Length: 26"
XS-3XL
STRETCH: 92% Polyester,
8% Spandex



WHAT'S NEW AND HOT



PINEAPPLE FIESTA NEW
618-PFT

Center Back Length: 26"
XS-3XL
STRETCH: 92% Polyester,
8% Spandex



OWL SEE YOU NEW
618-OSY

Center Back Length: 26"
XS-5XL
STRETCH: 92% Polyester,
8% Spandex



PAW-SITIVE NEW
618-PST

Center Back Length: 26"
XS-5XL
STRETCH: 92% Polyester,
8% Spandex



OZ NEW
618-OZZ

Center Back Length: 26"
XS-3XL
STRETCH: 92% Polyester,
8% Spandex



ORCHID PLAID NEW
618-OCP

Center Back Length: 26"
XS-3XL
STRETCH: 92% Polyester,
8% Spandex



GARDEN CATS NEW
618-GCT

Center Back Length: 26"
XS-3XL
STRETCH: 92% Polyester,
8% Spandex



PLAYFUL KITTENS NEW
618-PLK

Center Back Length: 26"
XS-5XL
STRETCH: 92% Polyester,
8% Spandex





**FLAMINGO FRENZ
618-FLZ**

Center Back Length: 26"
XS-3XL
STRETCH: 92% Polyester,
8% Spandex



**PINEAPPLE CANVAS
618-PCV**

Center Back Length: 26"
XS-3XL
STRETCH: 92% Polyester,
8% Spandex



**HARMONY
618-HMN**

Center Back Length: 26"
XS-3XL
STRETCH: 92% Polyester,
8% Spandex



**SARASOTA SANDALS
618-SRS**

Center Back Length: 26"
XS-3XL
STRETCH: 92% Polyester,
8% Spandex



**CORRAL MULTI
617-PCM**

Center Back Length: 26"
XS-5XL
100% Cotton



**EXPRESSIONS
618-EPS**

Center Back Length: 26"
XS-3XL
STRETCH: 92% Polyester,
8% Spandex



**FABULOUS FERN FLORAL
755-FFL**

Center Back Length: 26"
XS-3XL
STRETCH: 92% Polyester,
8% Spandex



**BLUE ROMANCE
755-BLR**

Center Back Length: 26"
XS-3XL
STRETCH: 92% Polyester,
8% Spandex



**FLORAL COLLAGE
725-FCL**

Center Back Length: 26"
XS-3XL
STRETCH: 92% Polyester,
8% Spandex



**BUDDING ROMANCE
785-BBT**

Center Back Length: 26"
XS-3XL
STRETCH: 92% Polyester,
8% Spandex



**FOXY LADY
618-FXY**

Center Back Length: 26"
XS-5XL
STRETCH: 92% Polyester,
8% Spandex



**RED BUFFALO PLAID
755-RBF**

Center Back Length: 26"
XS-3XL
STRETCH: 92% Polyester,
8% Spandex



LAB COAT Marvella



2816 Marvella

- Collared neck
- Zipper
- Princess seaming
- 4 pockets

Center back length: 29"

XXS-2XL

62% Polyester, 34% Rayon,
4% Spandex

BLA-BLACK
SLE-SLATE
WHI-WHITE



2814 **NEW** Marvella

- 2 way zipper
- Multi pockets
- Contrast trim cuffs and back
- Bungee cord loop

Center back length: 27 1/2"

XS-3XL

62% Polyester, 34% Rayon,
4% Spandex

BLA-BLACK
SLE-SLATE
WHI-WHITE



2815 Marvella

- Collared neck
- Zipper
- Patch pockets

Center back length: 29"

XXS-2XL

62% Polyester, 34% Rayon,
4% Spandex

BLA-BLACK
SLE-SLATE
WHI-WHITE

LAB COAT Marvella



2418 Marvella

- Collared neck
- 4-button front opening
- Front and back princess seaming
- Back yoke
- Bungee cord
- Two patch pockets

Center Back Length: 32"

XXS-2XL

62% Polyester, 34% Rayon,
4% Spandex

WHI-WHITE



2817 Marvella

- Collared neckline
- Small inner pocket
- Book fold details
- Double way zipper
- Princess seam
- Side slits
- Side pocket

Center Back Length: 32"

XXS-2XL

62% Polyester, 34% Rayon,
4% Spandex

BLA-BLACK

WHI-WHITE



2819 Marvella

- Collared neckline
- Small inner pocket
- Book fold details
- Princess seam
- Side slits
- Side pocket

Center Back Length: 28"

XXS-2XL

62% Polyester, 34% Rayon,
4% Spandex

BLA-BLACK

WHI-WHITE



LAB COAT



2417

- Collared neckline
- Small inner pocket
- Book fold details
- 4-way stretch fabric, quick dry fabric
- Double way zipper
- Princess seam
- Side slits
- Side pocket

Center Back Length: 32"

XXS-2XL

90% Polyester, 10% Spandex

BLA-BLACK

WHI-WHITE



LAB COAT



ALLURE

2411/2411X

- Notched lapel
- Chest pockets
- Button closure
- Patch pockets

Center Back Length: 32"

XXS-5XL

65% Polyester, 35% Cotton Poplin

WHI-WHITE



UNISEX LAB COAT



2068

- Hidden side pockets
- Back vent
- Patch pockets
- Button front opening
- Notched collar

Center Back Length: 38"

XS-2XL

65% Polyester, 35% Cotton

2068S

- Snap closure
- Center back vent
- Notched collar
- Patch pockets
- Single chest patch pocket

Center Back Length: 42"

3XS-3XL

65% Polyester, 35% Cotton



SNAP
CLOSURE
&
RIBBED
CUFFS



2068SRB

- Snap closure
- Ribbed cuffs
- Back vent
- Patch pockets
- Hidden side pockets
- Notched collar

Center Back Length: 42"

XXS-3XL

65% Polyester, 35% Cotton

2268SR

- Snap closure
- Ribbed cuffs

Center Back Length: 42"

XXS-3XL

100% Cotton

DRESSES



8011/8011X

- Mock wrap
- Seamed shaping
- Patch pockets with seaming
- Banded waist
- Set-in sleeve

Regular - 38" length
Plus size - 41" length

XXS-5XL

65% Polyester, 35% Cotton Poplin

WHI-WHITE



8014/8014X

- Spaghetti back tie belt
- Pleated mock wrap
- Patch pockets
- Small interior pocket

Regular - 38" length
Plus size - 41" length

XXS-5XL

65% Polyester, 35% Cotton Poplin

WHI-WHITE



Marvella



1019/1019X Marvella

- 2 Back button tab detail
- Button front dress
- Embroidered double collar
- Shaping seams
- Set-in sleeves

Regular - 44" length
Plus size - 44" length

6-20, 40-54

MARVELLA - 62% Polyester,
34% Rayon, 4% Spandex

BLA-BLACK

WHI-WHITE



9779/9779W Marvella

- 2 piece set
- Zipper back closure
- Round neck
- Back kick pleat
- Curved low back hemline
- Arched front hemline
- Patch pockets
- Pull-on elastic waist
- Natural rise

Top Regular - 29" length
Top Plus size - 30" length
Skirt Regular - 30" length
Skirt Plus size - 31" length

4-20, 16W-28W

MARVELLA - 62% Polyester,
34% Rayon, 4% Spandex

WHI-WHITE

9021 Marvella

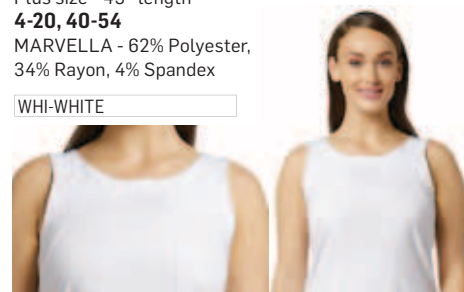
- 2 piece set
- Zipper back closure
- Structure seaming
- Cross detail

Regular - 43" length
Plus size - 45" length

4-20, 40-54

MARVELLA - 62% Polyester,
34% Rayon, 4% Spandex

WHI-WHITE



DUO SCRUBS



2262

- Set-in sleeves
- Single chest patch pocket
- Patch pockets

Center Back Length: 30"

XS-3XL

63% Polyester, 34% Cotton, 3% Spandex

BLA-BLACK
WHI-WHITE
NAV-NAVY
PWT-PEWTER
CEILB-CEIL BLUE
WINE-WINE
ROY-ROYAL
GRE-GREY



644

- V-neck
- Knit insert
- Angled patch pockets

Center Back Length: 26"

XXS-4XL

63% Polyester, 34% Cotton, 3% Spandex

BLA-BLACK
WHI-WHITE
NAV-NAVY
PWT-PEWTER
CEILB-CEIL BLUE
WINE-WINE
ROY-ROYAL
GRE-GREY



MEN

WOMEN



228

- Back Cargo pockets
- Patch pockets
- Seamed pockets
- Drawstring and zipper at waist

Inseam: 33" Inseam

XS-3XL

63% Polyester, 34% Cotton, 3% Spandex

BLA-BLACK
WHI-WHITE
NAV-NAVY
PWT-PEWTER
CEILB-CEIL BLUE
WINE-WINE
ROY-ROYAL
GRE-GREY



304

- Drawstring elastic waistband
- Seamed pockets
- Cargo pockets
- Back patch pockets

Inseam: 28"

XXS-4XL

63% Polyester, 34% Cotton, 3% Spandex

BLA-BLACK
WHI-WHITE
NAV-NAVY
PWT-PEWTER
CEILB-CEIL BLUE
WINE-WINE
ROY-ROYAL
GRE-GREY



ISOLATION GOWN



HOP014 NEW

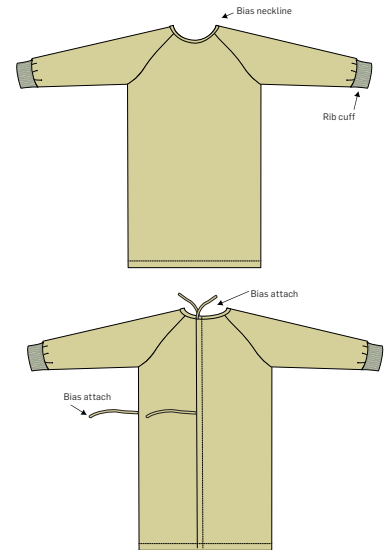
- Bias neckline
- Ribbed cuffs
- Bias attach

Fabric content: 80% Polyester, 20% Cotton
Fabric weight: 92 gsm
Gown weight: 325 grams per unit

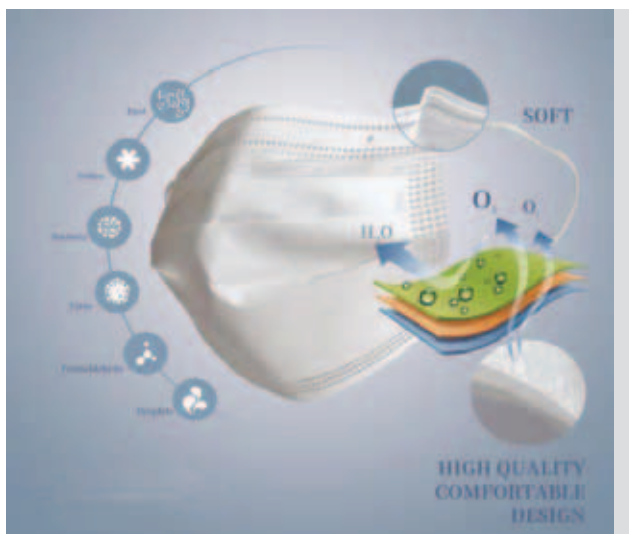
ONE SIZE

Chest, level underarm: 54 3/8"
Sweep in straight line: 54 3/8"
Center Back Length: 47 1/8"
Sleeve Length no Cuff: 30 1/4"
Sleeve Length with Cuff: 32 3/4"
Neck Width: 5"
Neck drop: 1 1/2"

Multi colors available



For more colors go to www.whitecross.ca



Mask NEW

- Non-Woven Disposable 3 Ply Face Mask

Sold in boxes of 50 pcs

MASK HATS



M100PR NEW

Sold in packs of 12

Outer layer : 100% Polyester Micropique
 Middle layer : Non woven interlining
 Inner Layer : 100% cotton
 Binding : 93% Cotton, 7% Spandex

WHI-WHITE

BLA-BLACK



CURE WORDINGS NEW 505CWG

100% Cotton



OUR CANADA NEW 505CDA

100% Cotton



KALEIDOSCOPE NEW 505KAL

92% Polyester, 8% Cotton



SWEET POPPY NEW 505SWP

100% Cotton



DREAMS OF GLORY NEW 505DGY

100% Cotton



MYSTIC GEMS NEW 505MYG

100% Cotton



SCARLETT NEW 505SET

100% Cotton



LEOPARD INFERNO NEW 505LFN

100% Cotton



DIAMOND FRENZY NEW 505DFZ

100% Cotton



PRISM PASSION NEW 505PSM

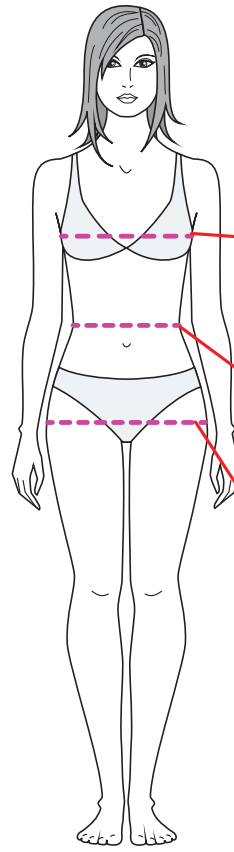
100% Cotton



BUFFALO PLAID NEW 505RBF

92% Polyester, 8% Cotton

FIND YOUR FIT



BUST
Wrap the measuring tape somewhat loosely around the fullest part of your chest (at nipple level).

WAIST
While standing straight, bend over to the front or side and make a note of where your body creases. This is your natural waist. It's the narrowest part of your torso, generally located between your rib cage and belly button.

HIPS
Wrap the tape measure around the fullest part of your hips and buttocks. This is usually located 7 to 9 inches (17.8 to 22.9 cm) below your natural waist.

STANDARD SIZE CHARTS (IN INCHES)

THE TABLES BELOW INDICATE WHAT SIZE A WOMAN WEARS IF HER MEASUREMENTS ARE:

WOMEN

SIZES	XXS	XS	SM	MD	LG	XL	XXL	3X	4X	5X
BUST	32-33	33-34	35-36	37-39	40-43	44-47	48-49	50-52	53-54	56-58
WAIST	24-25	25-26	27-28	29-31	32-34	35-38	39-41	42-44	45-46	48-50
HIPS	34-35	35-36	37-38	39-41	42-45	46-49	50-51	52-54	55-56	58-60

MEN / UNISEX

SIZES	XS	SM	MD	LG	XL	XXL	3X	4X	5X
CHEST	33-34	35-37	38-40	41-44	45-48	49-50	51-52	53-55	56-58
WAIST	24-26	27-28	29-31	32-34	35-38	39-41	42-44	45-47	48-50
HIPS	35-36	37-39	39-41	42-45	46-49	50-51	52-54	55-57	58-60



SCAN ME



For videos, photos
and more info on
White Cross products,
scan this QR code.



  @WHITECROSSSCRUBS

#WHITECROSS



WHITE CROSS

WHITE CROSS / 9600 Meilleur #950, Montreal, Quebec H2N 2E3 Canada
Toll-Free 1-800-909-9060 / Toll-Free Fax 1-866-673-2532 / service@whitecross.ca