

CHEROKEE[®]
— MEDICAL —
UNIFORMS

SPRING 2021

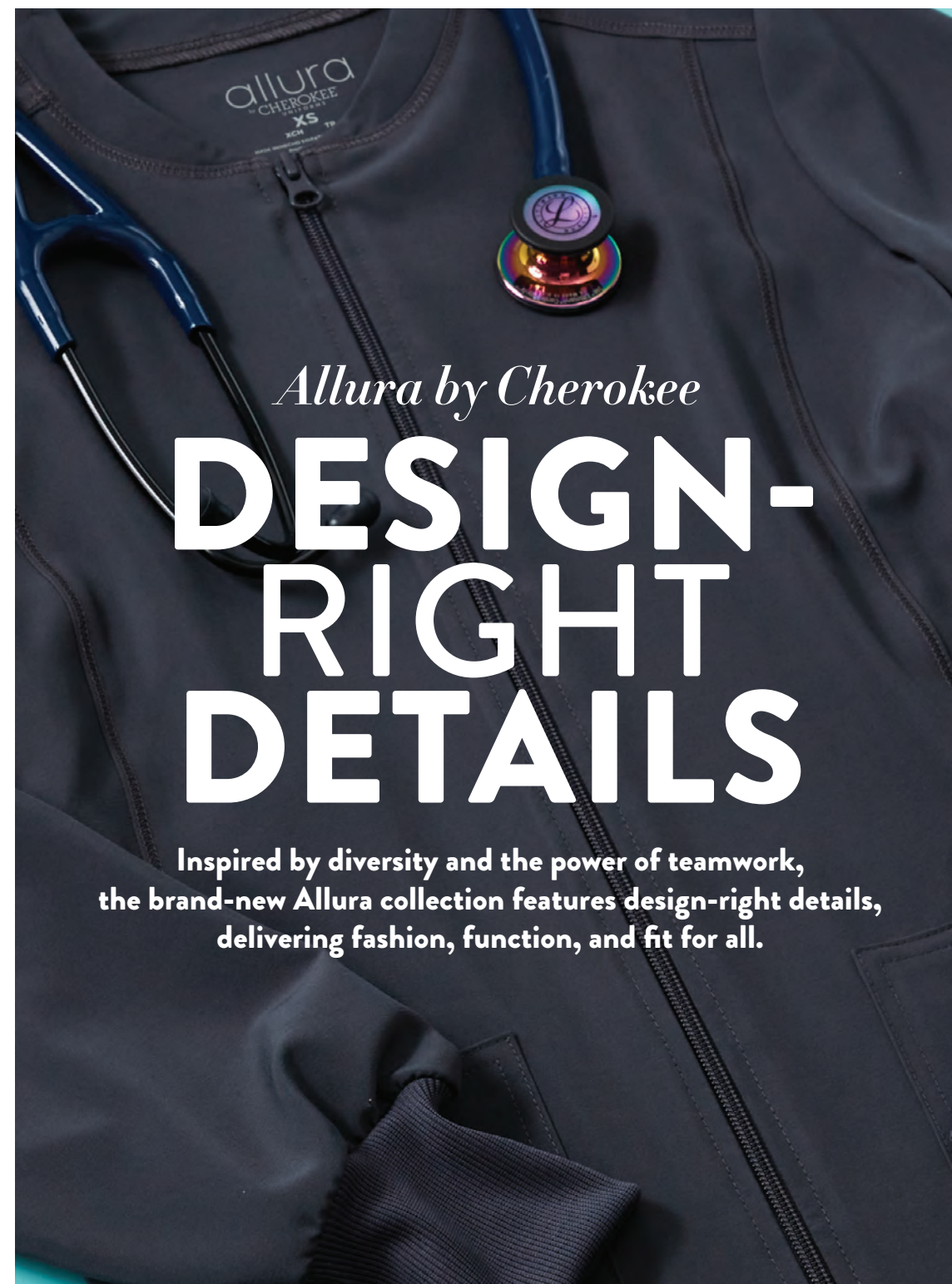


Left **CKK817** V-Neck Top and **CKK071** Mid Rise Jogger in Wine (WIN), *Katie Duke*;
 Middle **CKK817** V-Neck Top and **CKK071** Mid Rise Jogger in Caribbean Blue (CAR), *Katie Duke*;
 Right **CKK817** V-Neck Top and **CKK071** Mid Rise Jogger in Heather Grey (HTGR), *Katie Duke*





This page:
CKA685
 V-Neck Top
 in Black (BLK),
 Ciel (CIE), Wine
 (WIN), Navy (NAV),
 Royal (ROY), Pewter
 (PWT), Coral Rush
 (CORU), **Allura** |
 Opposite page: **CKA384**
 Zip Front Jacket in
 Pewter (PWT), **Allura**



Allura by Cherokee

DESIGN- RIGHT DETAILS

Inspired by diversity and the power of teamwork,
 the brand-new Allura collection features design-right details,
 delivering fashion, function, and fit for all.

*Allura by Cherokee is available exclusively to independent, brick-and-mortar retailers
 who meet certain qualifications. Contact your account executive for details.*

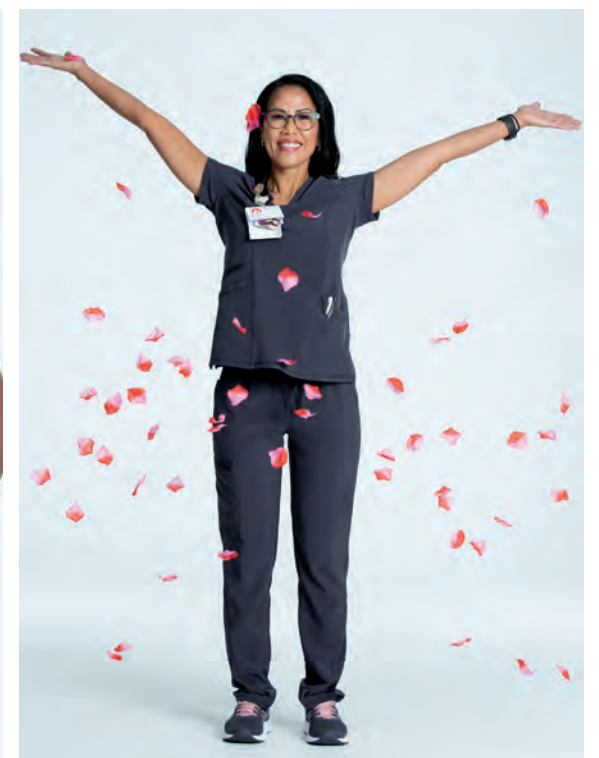
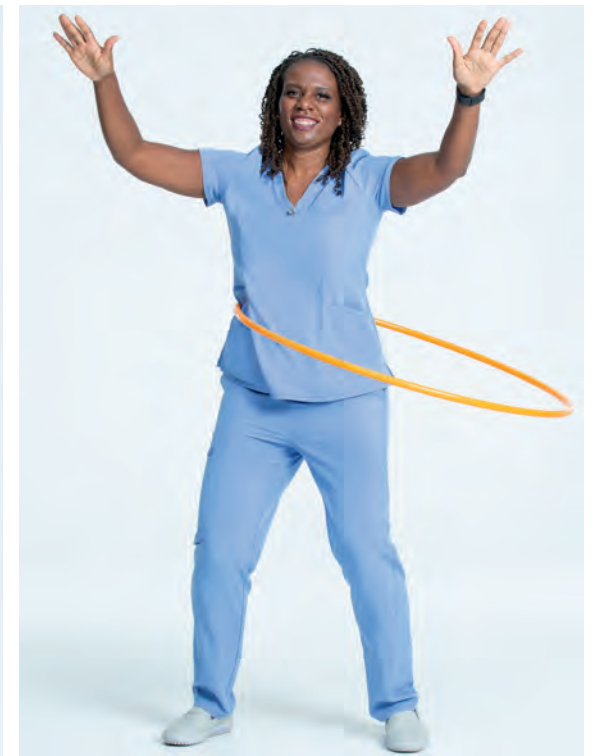
CKA184 Mid Rise Drawstring Pant in Coral Rush (CORU), **Allura**

CKA384 Zip Front Jacket in Wine (WIN), **Allura**

CKA684 V-Neck Top in Pewter (PWT), **Allura**

CKA685 V-Neck Top in Ciel (CIE), Wine (WIN), Coral Rush (CORU), **Allura**

The Allura collection for women and men offers performance and style in core and fashion colors.



Top Row: Left **CKA384** Zip Front Jacket, **CKA684** V-Neck Top and **CKA184** Mid Rise Drawstring Pant in Pewter (PWT), **Allura**; Right **CKA684** V-Neck Top and **CKA184** Mid Rise Drawstring Pant in Ciel (CIE), **Allura** | Bottom Row: Left **CKA684** V-Neck Top and **CKA184** Mid Rise Drawstring Pant in Ciel (CIE), **Allura**; Right **CKA684** V-Neck Top and **CKA184** Mid Rise Drawstring Pant in Pewter (PWT), **Allura**

“
They thought of
everything.
The pockets are
fantastic,
with more than
enough room to carry
practically anything I need
during my shift.
”

— Maybeth F. on Allura

CKA685 Mid Rise Jogger in Black (BLK),
Royal (ROY), Wine (WIN), Navy (NAV),
Ciel (CIE), Pewter (PWT), **Allura**



MEN AT WORK

The Allura men's collection emphasizes professionalism, teamwork, and great looks all around.



CKA686 V-Neck Top and
CKA186 Fly Front Cargo Pant in
Pewter (PWT), *Allura*



CKA186 Fly
Front Cargo Pant in
Royal (ROY), *Allura*

CKA686 V-Neck
Top in Pewter
(PWT), *Allura*

CKA686 V-Neck
Top in Navy
(NAV), *Allura*

CKA387 Zip Front Jacket
in Black (BLK), *Allura*

LET THE SUN SHINE IN

Left **2624A** Round Neck Top and
CK065A Mid Rise Pull-on Pant
in Lemon Sugar (LNSU), *Infinity*;
Right **2624A** Round Neck Top and
CK065A Mid Rise Pull-on Pant in
Blue Jay (BJYA), *Infinity*



WW601 V-Neck Top in Hunter Green (HUN), *Workwear Revolution*



Comfort and style never looked so good—with cuts and colors that are on-task and on-trend.



Left WW601 V-Neck Top and WW011 Natural Rise Jogger in Red (RED), *Workwear Revolution*; Middle WW603 V-Neck Top and WW012 Natural Rise Jogger in Hunter Green (HUN), *Workwear Revolution*; Right WW560AB Face Covering in Hunter Green (HUN), WW601 V-Neck Top and WW011 Natural Rise Jogger in Teal Blue (TLB), *Workwear Revolution*

New Colors **THE**
ALL-NEW
JOGGERS

The latest and greatest joggers from Infinity, with stretch, storage, and style for days. Now in new colors Teal Blue and Hunter Green in women's, Wine and Hunter Green in men's.

CK110A Mid Rise Jogger in
Hunter Green(HNPS), *Infinity*

WW560AB Face Covering
in Eggplant (EGG),
Workwear Revolution Tech



Left **WW560AB** Face Covering in Teal Blue (TLB), **Workwear Revolution Tech**, **CK530A** Reversible Quilted Vest in Heather Wine/Black (HWBK), **2624A** Round Neck Top and **CK110A** Mid Rise Jogger in Teal Blue (TLPS), **Infinity**; Middle **WW507AB** Scrubs Hat, **WW560AB** Face Covering in Pewter (PWT), **Workwear Revolution Tech**, **CK910A** Men's V-Neck Top and **CK004A** Men's Drawstring Jogger in Hunter Green (HNPS), **Infinity**; Right **WW560AB** Face Covering in Hunter Green (HUN), **Workwear Revolution Tech**, **CK765** Long Sleeve Underscrub Knit Tee in Pewter/Black (PWBK) and **CK110A** Mid Rise Jogger in Hunter Green (HNPS), **Infinity**



CK765
Long Sleeve
Underscrub
Knit Tee in Blue
Jay/Pewter
(BJPW),
Infinity

A hopeful new hue for Spring 2021,
Blue Jay is a brilliant addition to Infinity's scrubs lineup, shown
with a limited-edition coordinating underscrub.



Top: Left **2624A** Round Neck Top in Blue Jay (BJYA), *Infinity* and **WW560AB** Face Covering in Royal (ROY), *Workwear Revolution Tech*; Right **2624A** Round Neck Top and **CK065A** Mid Rise Pull-on Pant in Blue Jay (BJYA), *Infinity*; Bottom: Left **CK065A** Mid Rise Pull-on Pant in Blue Jay (BJYA), *Infinity*; Right **CK765** Long Sleeve Underscrub Knit Tee in Blue Jay/Pewter (BJPW) and **CK065A** Mid Rise Pull-on Pant in Blue Jay (BJYA), *Infinity*

Left **CK840** V-Neck Top and **CK095** Mid Rise Drawstring Pant in Teal Blue (TLB), **FORM**; Right **CK885** Men's V-Neck Top and **CK185** Men's Pull-on Cargo Pant in Pebble (PBBL), **FORM**



The sophisticated, versatile, **Form** collection expands into fashion-forward neutral Pebble and core classic Teal Blue.



New Collection

A MODERN TAKE ON THE LAB COAT

Inspired by healthcare heroes, the Project Lab collection offers seven ultra-soft, ultra-functional coats in Women's, Men's, and Unisex fits, with a Tall option available in five styles.



In a range of styles for men and women, Project Lab coats feature high-performance fabric and features tailor-made for the modern healthcare professional



Left **CK451** 28" Consultation Coat in White (WHT), **Project Lab**; Middle **CK452** 33" Lab Coat in White, **Project Lab**, **2625A** Mock Wrap Top and **CK065A** Mid Rise Pull-on Pant in Royal (RYPS), **Infinity**; Right **CK401** Men's 30" Consultation Coat in White (WHT), **Project Lab**, **CK910A** Men's V-Neck Top and **CK004A** Men's Drawstring Jogger in Navy (NYPS), **Infinity**



Left **CK460** Unisex 38" Lab Coat in White (WHT), **Project Lab**; Right **CK460** Unisex 38" Lab Coat in White (WHT), **Project Lab**



Ensembles that look as polished as they perform, with plenty of smart storage, including tablet pockets for tech-savvy patient care. For future STEM professionals, a kid's lab coat is also available.





WW855AB
Long Sleeve V-Neck
Top in Navy (NAV),
*Workwear
Revolution Tech*

*Wash all garments thoroughly after each use. Garments with Certainty antimicrobial technology do not protect users or others against bacteria, viruses, or disease organisms. Always follow all best practices for infection prevention.

GREAT LENGTHS



A brand-new addition to
Workwear Revolution Tech and
Infinity—a long-sleeve scrub top
with **Certainty® antimicrobial
technology*** to reduce bacteria that
cause odors and degrade fabric.

Left **CK781A** Long
Sleeve V-Neck Top and
1123A Low Rise Drawstring
Pant in Ciel (CIPS), *Infinity*;
Right **CK781A** Long Sleeve
V-Neck Top and **CK110A**
Mid Rise Jogger in
Navy (NYPS), *Infinity*



Trend Alert

MEN'S ZIP FRONT JACKET

A handsome addition to the Infinity men's line, this jacket has a stylish stand-up collar, flexible rib-knit panels on the inner sleeves and sides, and three pockets for handy storage.

CK332A Men's Zip Front Jacket
in Navy (NYPS) and **CK004A**
Men's Drawstring Jogger in Pewter
(PWPS), *Infinity*



All-New For Men

A FLEX FORWARD

CK661 Men's
V-Neck Top in
Royal (ROY),
iFlex

By popular demand, Cherokee introduces the iFlex collection for men.

The iFlex men's line offers round-the-clock comfort and on-trend styling with a v-neck top and drawstring cargo pant.





WW507AB Scrubs Hat in Pewter (PWT), *Workwear Revolution Tech*

CK920 Tri It Out (TRII), *Infinity*



CK920 Tri It Out (TRII), **CK004A** Men's Drawstring Jogger in Black (BAPS) and **CK598A** Laundry Bag with Shoe Compartment in Pewter (PWPS), *Infinity*

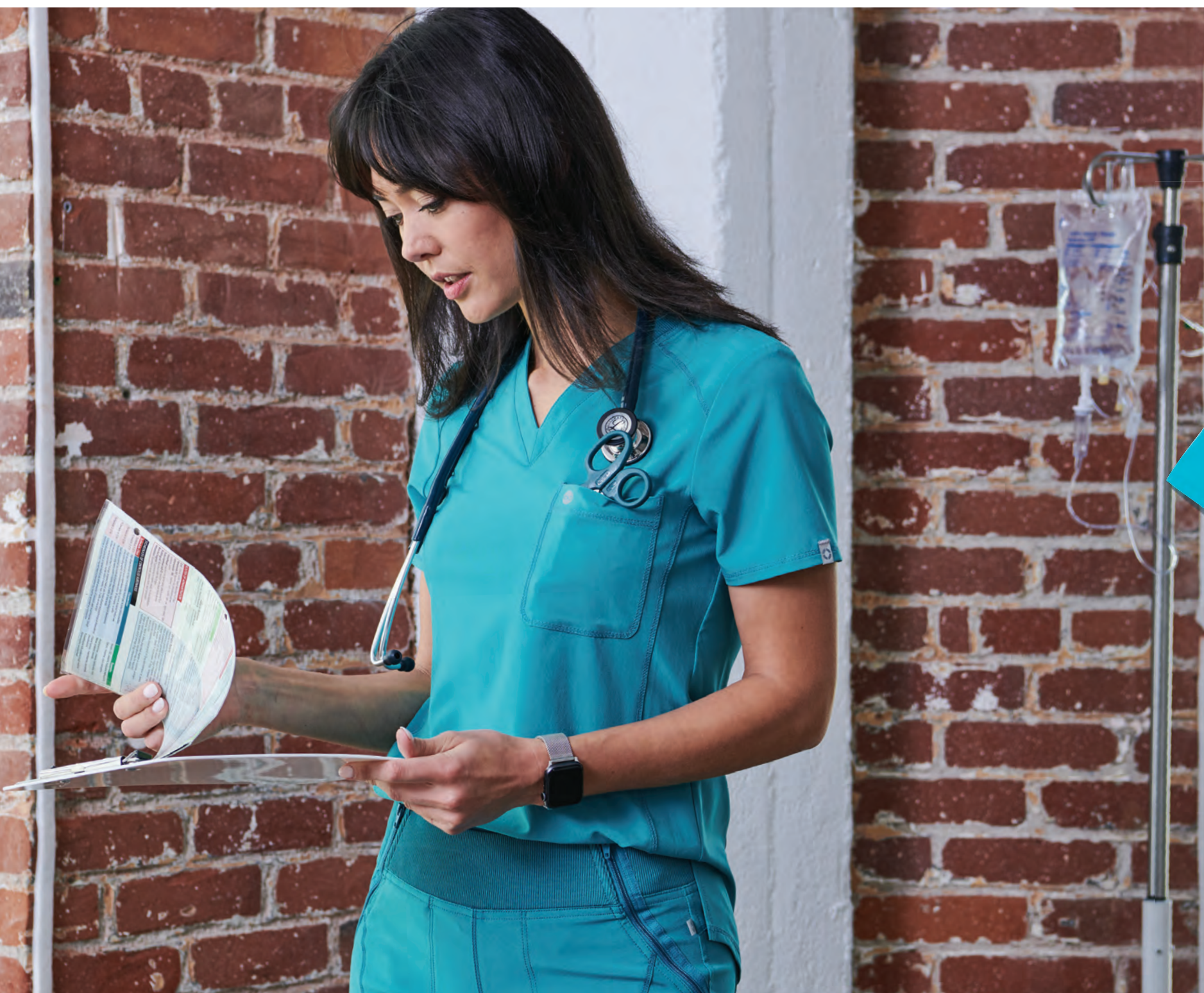
A bold new print for Spring 2021, shown here with the new Infinity drawstring laundry bag with shoe compartment.

This page: **WW2968**
V-Neck Knit
Panel Top in Navy
(NAV), **Workwear
Professionals** and
WW560AB Face
Covering in Navy
(NAV), **Workwear
Revolution Tech**
| Opposite page:
WW2875 V-Neck
Knit Panel Top
in Navy (NAV),
Workwear Revolution



SLEEK SILHOUETTE





A brand new Infinity v-neck top that's sleek in every size, with rib-knit side panels for flexibility and fit at the neckline, front and back shoulder yokes, and on-trend shirrtail hem.



* Also available in Caribbean Blue (CAR), Pewter (PWT), and Royal (ROY) (not pictured)

This page: **CK687A** V-Neck Top and **CK110A** Mid Rise Jogger in Teal Blue (TLPS), *Infinity* | Opposite page: **CK687A** V-Neck Top in Teal Blue (TLPS), Ciel (CIPS), Black (BAPS), Wine (WNPS), Navy (NYPS), *Infinity*

New Addition

MATERNITY SCRUBS

Introducing a comfortably chic maternity ensemble from
Workwear Revolution, with fabrics and design features that
stretch to accommodate her changing shape.



WW688 Maternity
Mock Wrap Top and
WW155 Maternity
Pull-on Pant in
Royal (ROY),
Workwear Revolution



Left **CK609**
Daisies For Days
(DYOS) and
CK110A Mid Rise
Jogger in Pewter
(PWPS), *Infinity*;
Right **CK895A**
V-Neck Top and
CK295A Mid Rise
Jogger in Pewter
(PWPS), *Infinity*

IT'S ALL
ABOUT
DETAILS



Infinity ushers in Spring 2021 with fresh new designs and silhouettes for a season full of hope and promise.



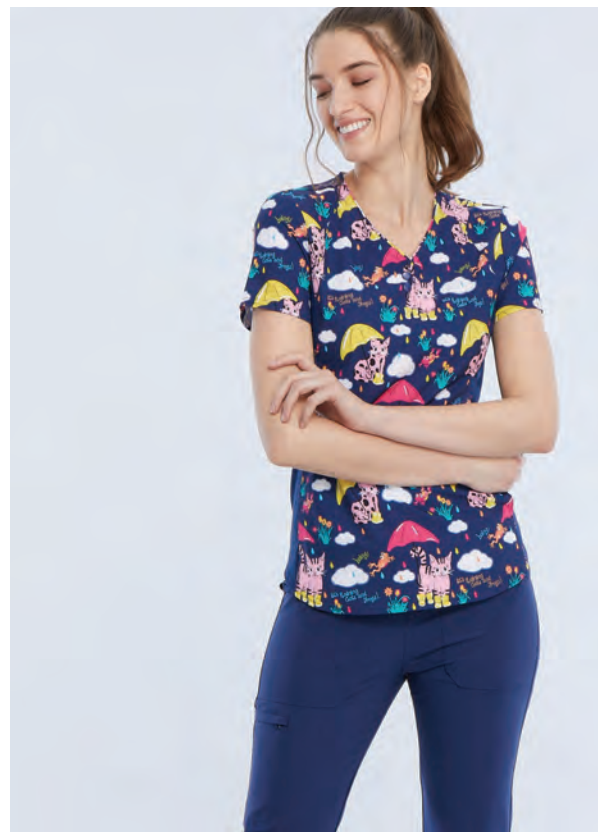
Top **CK895A** V-Neck
Top in Pewter (PWPS),
Infinity; Bottom **CK609**
Daisies For Days
(DYOS) and **CK295A**
Mid Rise Jogger in
Pewter (PWPS), *Infinity*



CK641 Flower Tech (FWTC) and **CK010** Mid Rise Drawstring Pant in Black (BLK), *iFlex*



A. **CK637** Pand-Aid (PAID), B. **CK662** Polka Dot Spot (PLKA), C. **CK637** Toad Away (TAAW), D. **CK692** (Men's) In The Wild (INHW), E. **CK301** Loving Floral (LOFA), F. **CK616** Earth Day (EART), G. **CK652** Stay Curious (STCU), H. **CK652** My Main Squeeze (MQUZ), I. **CK651** Llama Love (LAMV), J. **CK652** Hey Baby (HEYB), K. **CK301** Purr-fect Day (PU DY) in *Cherokee Prints*



This page: **CK636** Butterfly Brilliance (BUYB), **iFlex** | Opposite page: Top Left **CK732** Just Be-Leaf (JUSB); Top Right **CK641** Geometry Lessons (GEOT); Bottom Left **CK642** Waving Wildflowers (WAVW); Bottom Right **CK732** Raining Cats And Frogs (RACF), **iFlex**

MUTTS WITH A MESSAGE

This new Dog is Good® character
print sends a happy message about
diversity and inclusion.

CK616 Welcome
Diversity (OGWD),
Cherokee Prints
and CK110A Mid
Rise Jogger in Navy
(NYPS), **Infinity**





Left **CK609** Sundown Stems (SUNO); Right **CK654** Definitely Dots (DFDO), *Infinity*

PRINTS THAT WORK

Infinity print tops are crafted from a polyester/spandex poplin that makes them as functional as they are fun.



Left **CK634** Sporty Speckles (SKYS) and **CK110A** Mid Rise Jogger in Pewter (PWPS);
Right **CK608** Colorful Blooms (CLFU), *Infinity*

CK656 Marvelous Marble (MVMA), *Infinity*



CK110A Mid Rise Jogger in White (WTPS), *Infinity*





TF599 Rumbly Tumbly (PHLY), Tooniforms

TF699 Rumbly Tumbly (PHLY), Tooniforms

DESIGNS WITH CHARACTER

Tooniforms springs forth with a new lineup of favorites to brighten your day.



Top Row: Left **TF749** My Name Is Francis (BFIF); Right **TF637** Up (UPPP) | Middle Row: Left **TF747** Love Happens (MKLH); Middle **TF634** Ha Ha (MKHH); Right **TF743** Born To Rule (LKUL) | Bottom Row: Left **TF627** Forest Frolic (BAAU); Right **TF744** Hercules (HRUL), Tooniforms



56 | CherokeeUniforms.com

COMFORTSUPPORT
Chomp Chomp
(FNCHP), *Tooniforms*

Disney elements © Disney;
Disney • Pixar elements © Disney/Pixar
Spring 2021 | 57



This page: **TF637**
Jasmine Nights
(PRGH), **Tooniforms**
and **WW011** Natural
Rise Jogger in Navy
(NAV), **Workwear**
Revolution | Opposite
page: **TF637** Glass
Slipper (PRSS),
Tooniforms and
CK110A Mid Rise
Jogger in Black
(BAPS), **Infinity**



Taking style up a notch or two—playful Lilo & Stitch scrub with black tie detail.





DID SOMEONE SAY COOKIES?

This sweet scrub top features Sesame Street's Cookie Monster and his famous phrase.





New and Trendy

STAR WARS™ PRINTS

A out-of-this-galaxy favorite for generations,
Star Wars marches forth with fresh new styles
for men and women.

This page: **TF606**
My Only Hope
(SRLY), **Tooniforms**
and **CK004A** Men's
Drawstring Jogger in
Black (BAPS), **Infinity** |
Opposite page: **TF502**
My Only Hope (SRLY),
Tooniforms





Fashioned like a football jersey, styled for all-day comfort, the Darth Vader 77 top is a Spring 2021 must-have for fans of the dark side.



TF702 Gotham City™
(DMGC), *Tooniforms*

TF509 Bat-Signal™
(DMBS), *Tooniforms*

CK004A Men's
Drawstring Jogger in
Royal (RYP), *Infinity*

IT'S BATMAN!

DC Comics' Caped Crusader races all the way from Gotham City to star in this all-new V-neck print.

MARVEL



This page: **TF702** Hulk
62 (MAIX), **Tooniforms** |
Opposite page: Left **TF718**
Avengers Hero (MAGH),
Tooniforms and **WW011**
Natural Rise Jogger in
Red (RED), **Workwear**
Revolution; Right **TF627**
Team Up (MAUP),
Tooniforms and **CK110A**
Mid Rise Jogger in Black
(BAPS), **Infinity**



TF751 Keroppi Tropical (KPPP), *Tooniforms* and CK110A Mid Rise Jogger in Royal (RYPs), *Infinity*

©1988,2021 SANRIO CO., LTD. User Under License.



CK110A Mid Rise Jogger in White (WTPS), *Infinity*, TF599 Supercute Snack Pack (HSSP), TF750 Supercute Snack Pack (HSSP) and COMFORTSUPPORT Friendship Fries (HSIFY), *Tooniforms*

©1976,2021 SANRIO CO., LTD. User Under License.



TF614 Spotting Trouble (SEOU), **Tooniforms**

TM & © 2021 Dr. Seuss Enterprises, L.P.

74 | CherokeeUniforms.com

Left TF599 Bello Minion (DPBO), **Tooniforms**;
Right TF699 Bello Minion (DPBO), **Tooniforms**

© Universal City Studios LLC. All Rights Reserved.

Spring 2021 | 75



PEANUTS





New Unisex Print
**LOONEY
TUNES**

Fun and fitting for men and women,
this new top features three familiar
faces –Bugs Bunny, Tweety Bird, and
Tasmanian Devil.



Left **TF606** House Call (LTDO),
Tooniforms and **CK110A** Mid
Rise Jogger in Pewter (PWPS),
Infinity; Right **TF606** House
Call (LTDO), **Tooniforms** and
CK004A Men's Drawstring
Jogger in Pewter (PWPS), **Infinity**

LOONEY TUNES and all related characters and
elements © & TM Warner Bros. Entertainment Inc. (s21)

Spring 2021 | 79

CherokeeUniforms.com



@CherokeeUniforms

@myInfinityScrubs

